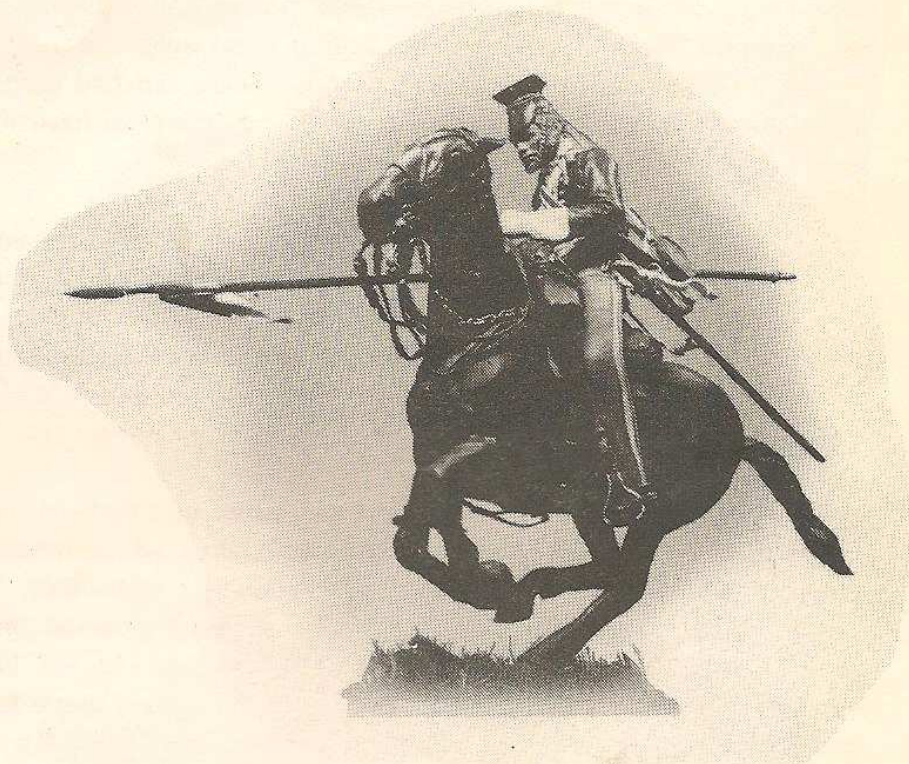


401

HEARNE ORIGINALS

CATALOGUE

1981



**'THE FIRS' 10 FRIARS WALK, EXETER,
DEVON EX2 4AY, ENGLAND.**

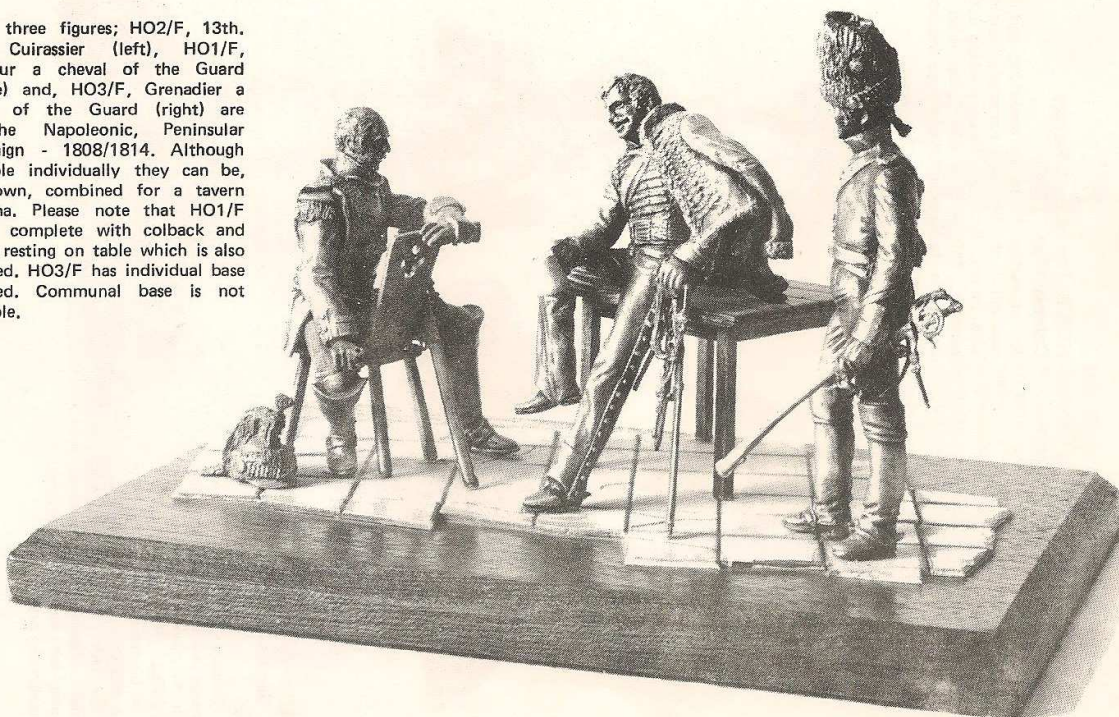
Telephone: Exeter (STD 0392) 31062.
International Code England, 392.

This comprehensive catalogue clearly illustrates the kits produced to date by our company which we hope, will make obvious the unique and interesting subjects which can be purchased either directly from us or through your dealer. "HEARNE ORIGINALS", we would like to think, ARE precisely that. Since our formation we have endeavoured to introduce single figures and vignettes which are "original" in their concept; ideas that break-away from the old, stiff toy soldier outlook. If our thousands of very satisfied customers throughout the world are anything to go by, then we have indeed taken the right course.

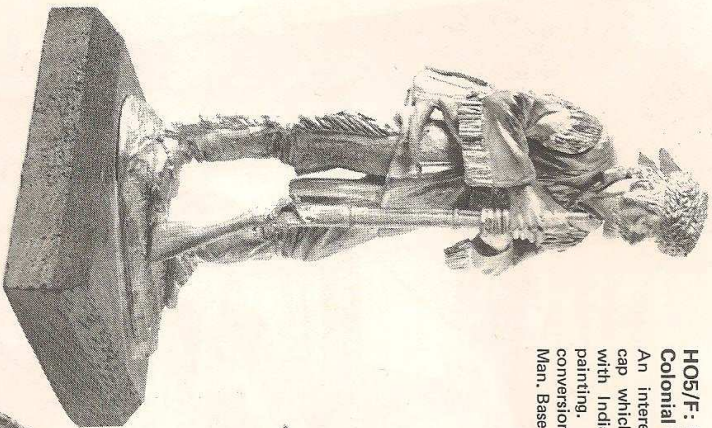
You may have sent for this booklet out of curiosity and do not have any of our models gracing your collection but it is to be hoped that something in the following pages will stimulate your interest. However if you have had the pleasure of assembling and painting our sculptures, it is possible you will rediscover a subject you intended to purchase but which had slipped your mind.

Whatever the circumstances we can assure you that "HEARNE ORIGINALS" kits are produced in high-quality white metals for emphasis of detail and, where necessary, allow for reasonable, "non-snap" manipulation of parts. Our horses shown supported on one or two legs, have strong, steel rod integrally cast in the limb/s, extending into the body and base pins to insure against metal fatigue and subsequent, unavoidable droop and disfiguration. Something which we consider an essential of design; something also which we believe, safe-guards your important modelling investment.

Should you see something that captures your interest then, speak to your supplier or, if you wish, come to us direct.

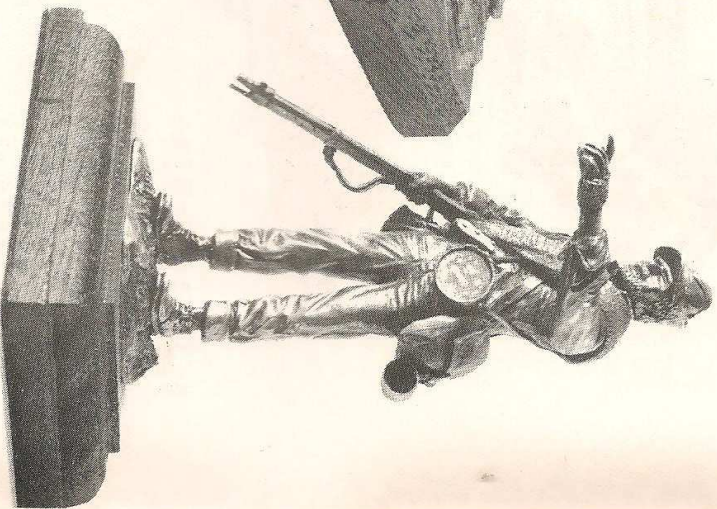


These three figures; HO2/F, 13th. Reg. Cuirassier (left), HO1/F, Chasseur a cheval of the Guard (centre) and, HO3/F, Grenadier a cheval of the Guard (right) are of the Napoleonic, Peninsular Campaign - 1808/1814. Although available individually they can be, as shown, combined for a tavern diorama. Please note that HO1/F comes complete with colback and gloves resting on table which is also supplied, HO3/F has individual base supplied. Communal base is not available.



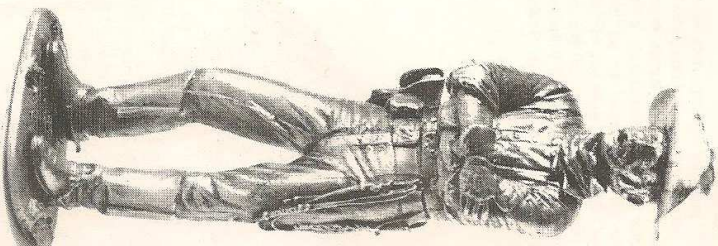
HO5/F: French Bush Runner
Colonial Wars - 1754.

An interesting figure in buckskins and fur cap which can be made extremely colourful with Indian, decorative beading added in the painting. This subject also lends itself to conversion to Western Pioneer or Mountain Man. Base included.



HO4/F: American Soldier of the Seminole Indian Wars - 1839.

A "Swamp Soldier" of the campaign in the Florida Everglades, which saw more men dying of fever than bullets. This sculpture, to the best of our knowledge, is the only one available cognizant of the war. For the painter it is an excellent "human weathering" exercise. Complete with painting instructions and sculptured base.



HO7/F: U. S. Cavalry Sergeant,
Apache Territory - 1880's.

A determined study of a N. C. O. Trooper on campaign in the harsh, unrelenting Arizona desert. The figure features fully three-dimensional pistol holster and a choice of headwear - kepi or campaign hat; assembly/painting instructions and metal base.

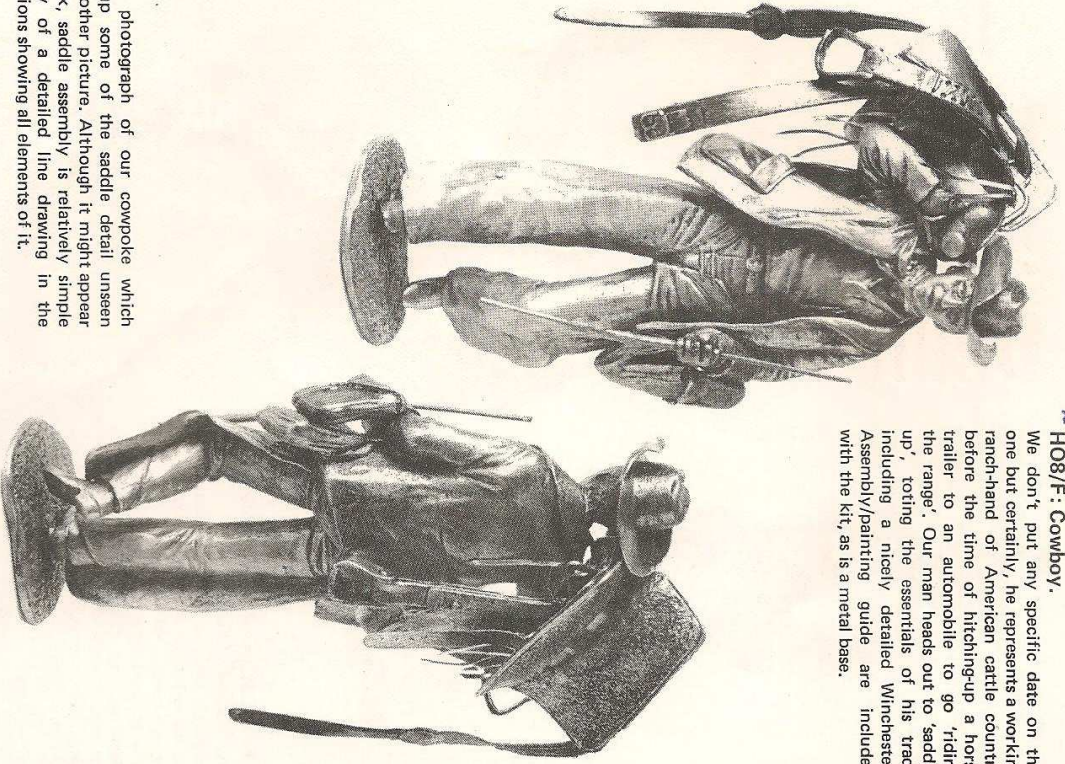


HO6/F: A.C.W. Union Artilleryman,
Brandy Station - 1863.

A Corporal Gunner/Driver defiantly making his last stand during the biggest cavalry encounter of the war. This figure is an interesting departure from the tendency for continuing A.C.W. cavalry and infantry studies. Base has trampled gun bucket modelled into it for added interest.

H08/F: Cowboy.

We don't put any specific date on this one but certainly, he represents a working ranch-hand of American cattle country before the time of hitching-up a horse trailer to an automobile to go 'riding the range'. Our man heads out to 'saddle up', totting the essentials of his trade including a nicely detailed Winchester. Assembly/painting guide are included with the kit, as is a metal base.



A rear photograph of our cowpoke which points-up some of the saddle detail unseen on the other picture. Although it might appear complex, saddle assembly is relatively simple by way of a detailed line drawing in the instructions showing all elements of it.

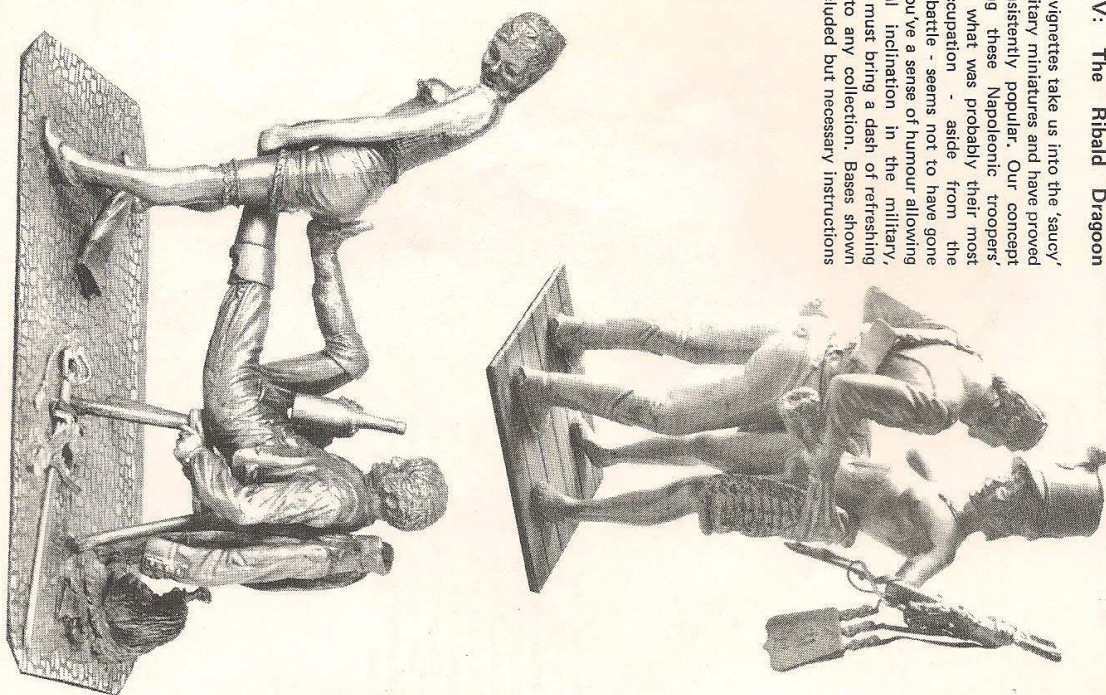
H01/L: Mameluke of the First Contingent in France - 1808.

Also the first - and so far the only - subject we offer designed to 130mm. This striking figure will enrich any collection and features the full armoury of these colourful, formidable fighters a curved dagger in the sash, a brace of holstered pistols, cavalry blunderbuss and an Orientally slung, scimitar. Parts hollow cast, the kit also includes painting/assembly instructions and raised metal plinth.

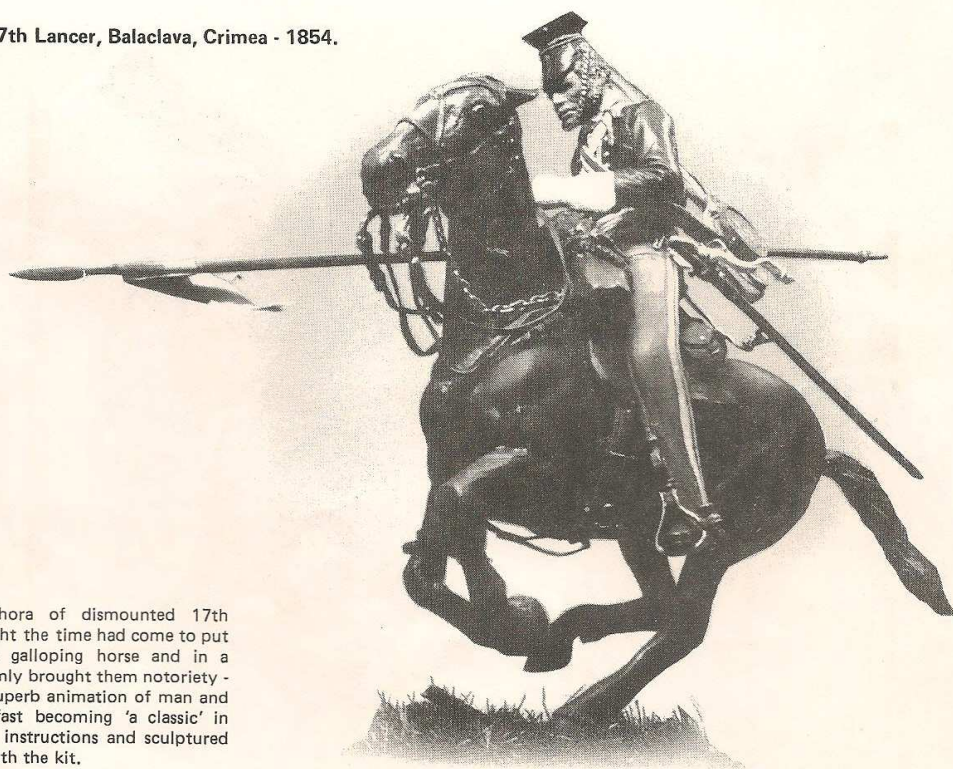


**HO2/V: The Amorous Hussar (right)
& HO1/V: The Ribald Dragoon
(below).**

These two vignettes take us into the 'saucy' area of military miniatures and have proved to be consistently popular. Our concept of showing these Napoleonic troopers engaged in what was probably their most ardent occupation - aside from the occasional battle - seems not to have gone amiss. If you've a sense of humour allowing for natural inclination in the military, then these must bring a dash of refreshing difference to any collection. Bases shown are not included but necessary instructions are.



HO1/E: British 17th Lancer, Balaclava, Crimea - 1854.



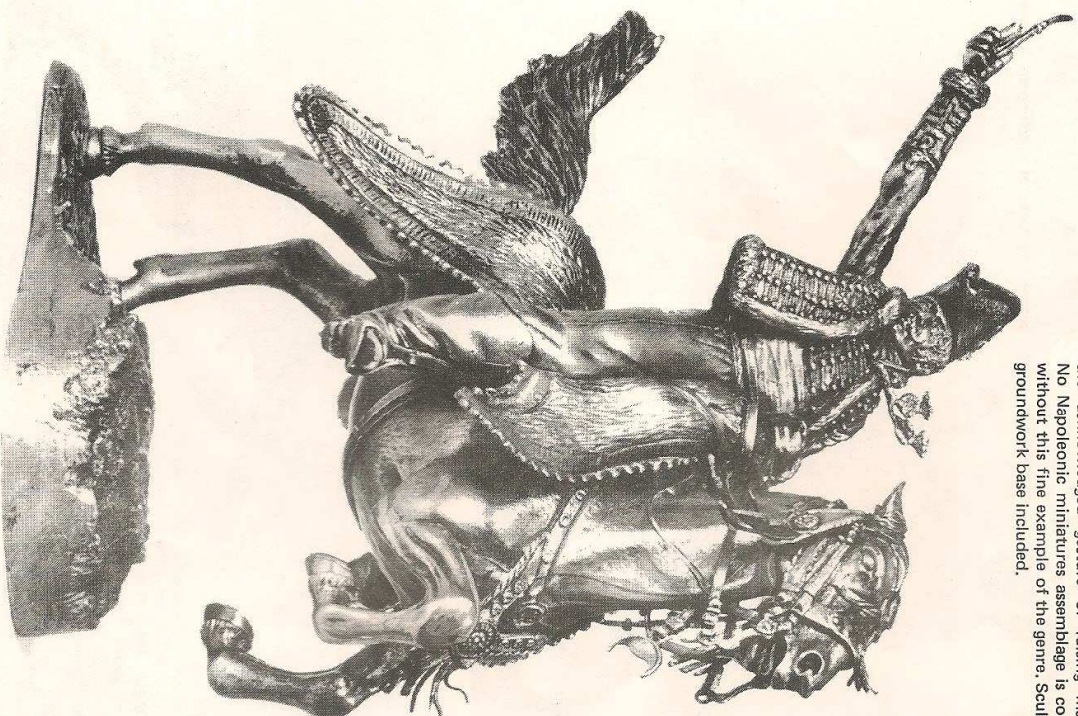
Observing a plethora of dismounted 17th Lancer's, we thought the time had come to put the subject on a galloping horse and in a posture that so firmly brought them notoriety - in the charge! A superb animation of man and animal which is fast becoming 'a classic' in its field. Relevant instructions and sculptured metal base come with the kit.

Surprisingly, in the light of their military extravagance, this subject has received little attention from manufacturers. Now, based on intensive research, we make available this outstanding study of these colourful warriors. Painting of the horse cover and the wings alone, will provide hours of painting satisfaction and, upon completion, the figure will prove a distinctive addition to your collection.



HO2/E: Polish Winged Hussar, Pskoff, at the surrender of Ivan the Terrible - 1581.

This active portrait sculpture was inspired by the famous painting of Edouard Detaille (1848/1912) and depicts this most outstanding of 1st Empire cavalry commanders bringing on his troops by the acknowledged gesture of raising his pipe. No Napoleonic miniatures assemblage is complete without this fine example of the genre. Sculptured groundwork base included.



HO/3: General Charles La Salle of Napoleon's Army - 1778/1809

70mm FANTASY!



HO1/S: The Plunderer.
This spirited sculpture of a mounted, marauding barbarian marks the first of HEARNE ORIGINALS entry in the increasingly popular field of fantasy figures.

As much as this subject is intended for fantasy enthusiasts, the fact that the rider is semi-nude and the horse a complete entity of four parts in itself, makes it suitable for conversion.



HO2/S: Male Barbarian.

HO3/S: Female Barbarian.

Fantasy miniaturists will quickly spot the potential of these two figures as part of the composition of, perhaps, a bizarre diorama.

As the pictures show they are designed as a pair: side-by-side, challenging The Plunderer (HO1/S), back-to-back, meeting attack from different directions or, opposed to each other. Obviously well muscled for ease of painting and adorned sparingly in the best fantasy fashion.

HO1/A: HORSE.

Here we make available the fine, 70mm. animal designed for the Plunderer but devoid of head halter and girth. Need we say that this equine study could prove most useful to miniaturists who seek a nude model horse for any number of reasons. As a spirited mount for a scratch built figure, as part of a 'breaking' scene or, simply as an ornament.



It also occurs that this might be just the thing to involve wife, girlfriend or youngsters in your intriguing hobby. Of only four positively fitting parts, it is easy to assemble and, with superb muscularity, painting is virtually effortless. Polished or antiqued and suitably mounted it makes for a beautiful home decoration. An applicable metal groundwork base is provided.

HEARNE ORIGINALS Ltd carries the name of the company's creator who continues as designer of the figures which we manufacture - Bill Hearne. Bill, both in an amateur and professional capacity, has built a world acknowledged reputation for his craftsmanship which is founded in a solid, formal art education. Doubtless this academic background gives his work faultless authority in anatomy, muscularity and animation of humans and animals. With a determined philosophy towards detail, proportion and related scales, he painstakingly creates 'masters' to a degree which fosters the earnest respect of discerning collectors of the resulting commercial white metal miniatures.

Bill has probably got a cupboardful of top awards he has won in B. M. S. S., M. E. E. and other competitions prior to his forming the company you associate his name with today. Dedicated modellers will readily remember with affection his Harley-Davidson mounted, W.W. 11, U.S. M. P., his two German soldiers crewing a B.M.W., m/c combination, the fine, 54mm. study of an Arab Legionaire (W.W.11) with a heavily adorned camel, his 30 mm. W. W. 1, Vickers-Glyno, m/c machine-gun combination. . . . We could go on. As an article contributor to Military Modelling, Scale Models and other publications, Bill's thorough-going treatment of his subjects has inspired enthusiasts and encouraged beginners to excel in the hobby. Much of his work has disappeared into private collections but many are still occasionally seen in photographic form in modelling periodicals. Happily however his unique ideas and craftsmanship are now commercially available exclusively through HEARNE ORIGINALS and our worldwide chain of dealer outlets.

Don't discard or destroy this convenient personal reference to the HEARNE ORIGINALS range of figures because we plan to periodically make available up-dated additions to it.



