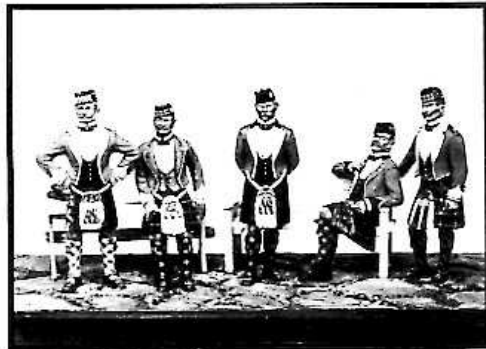
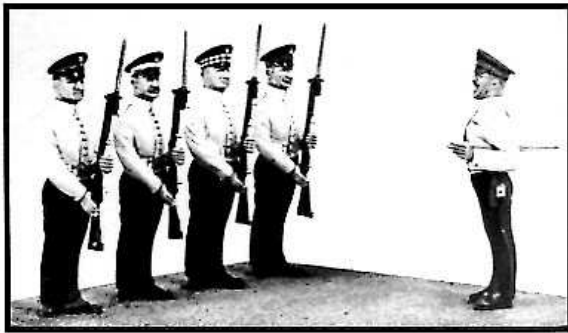




# Ensign Miniatures Limited



# Ensign Miniatures Limited

MAKERS OF HIGH QUALITY MILITARY AND NAVAL FIGURES  
IN TIN RICH ALLOY.

**BRITISH ARMY OFFICERS MESS DRESS-c.1900 54mm.**

**A Range of 25 different Figures, 19 of these being available either wearing Head Dress or Bareheaded with separate cap, giving a total selection of 44 models.**

When one considers, that in the British Army, Mess Dress was almost certainly worn more frequently than Full Dress, its representation in the model soldier world has been sadly lacking, being very infrequently seen in collections and exhibitions.

It is hoped that this range of figures will rectify that situation.

The original concept was to produce a half dozen models of different types and dates, the rest being left to the collectors ingenuity.

As more and more research was carried out, it was realised that there was a good deal more to Mess Dress than a well cut jacket and trousers.

A decision was made to go further.

The late Victorian period was chosen. At this date the uniforms had not become too standardised, gold lace was still much in evidence and there was the illustrated Dress Regulations of 1900, readily available.

At this point every Regimental Museum in the country was approached, with a view to gaining confirmatory evidence of details.

We would like to place on record our sincere thanks and appreciation to those Officers Commanding Home Headquarters and Curators of Regimental Museums for the most useful information and help received, which in one instance, even included the loan of an actual Mess Jacket!

A final decision was made to design and produce enough different figures to enable the collector to paint one or more of every type of Mess Dress in the army, or with minimal conversion work to create representative figures of any or all the regiments, corps and departments on the establishment at this time.

We believe that never before has a particular type of British Army Dress been presented in model form in such depth.

Illustrated below is the much photographed scene titled "News from South Africa", depicting officers in a Garrison Mess garden just prior to the evening meal and discussing the latest news from the Seat of War.

This vignette won the Nicholson Trophy Award for commercial figures at the B.M.S.S. annual competitions in 1974 and the original is now on display in the Model Soldier Exhibition at Woburn Abbey.

24 figures from the 44 available in the range were used and no alterations of any kind were made to the original castings except in the case of 2 figures – MD 6 and MD 7A, where very minor modifications were carried out to make these C1914 models suitable for C1900.

It will be noted that a considerable number of the figures are designed to be used with Garden Furniture being either seated, leaning or with leg raised. A full list appears on the facing page with the recommended appropriate item of furniture, it should be mentioned however, that many collectors have successfully substituted their own objects such as stone-walling or logs.

Apart from the obvious natural and imaginative stances, collectors have quickly appreciated that each of these figures is designed to complement the others.

Every figure stands well in its own right, any pair or trio can be selected to form a small conversational piece and from there, any combination is possible, up to the maximum number of 22, without any conversion work whatsoever.



*Photo by Courtesy of "Military Modelling"*

#### MESS DRESS C1900

MD1 or 1A	Lieut.	1st Life Guards	Free Standing
MD2 or 2A	Lieut.	R.H.A.	Free Standing
MD3 or 3A	Lieut.	Scots Guards	Free Standing
MD4 or 4A	Major	A.S.C.	Free Standing
MD5 or 5A	Major	R.A.M.C.	Free Standing
MD9 or 9A	Major	R.H.G.	Seated – Bench
MD10 or 10A	Captain	R.E.	Leaning – Bench or Chair
MD11 or 11A	Captain	Gren. Guards	Seated – Table
MD12 or 12A	Surgeon	Major General	Seated – Chair
MD13 or 13A	Captain	A.P.D.	R/foot up – Bench or Chair
MD14 or 14A	Lieut.	H.L.I.	Seated – Table
MD18 or 18A	Lieut.	9 Q.R. Lancers	Leaning – Bench
MD19 or 19A	Lieut.	Rifle Brigade	Leaning – Bench or Chair
MD20 or 20A	Captain	Royal Scots Greys	Leaning – any item
MD21 or 21A	Captain	K.R.R.C.	Leaning – Table
MD22 or 22A	Captain	Somerset L.I.	Leaning – Bench or Chair
MD23 or 23A	Major	Duke of Wellingtons	Free Standing
MD24 or 24A	Lieut.	Oxfordshire L.I.	Right foot up – Table
MD25 or 25A	Captain	3 (K.O.) Hussars	Free Standing
MD15	Captain	A & S Highlanders	Available as Group only. 15
MD16A	Midshipman	R.N.	is shaking hands with 16A.
MD17	Lieut.	R.N.	17, hand on shoulder of 16A.

#### C1914

MD6	Lieut.	2nd Life Guards	Free Standing
MD7A	Major	Infantry	Free Standing

#### “MODERN” (Tropical)

MD8A	Captain	R.A.P.C.	Free Standing
------	---------	----------	---------------

NB. MD8A is wearing Kamarband instead of Waistcoat and can be used, without conversion, to depict one of a large number of different Regt's or Corps.

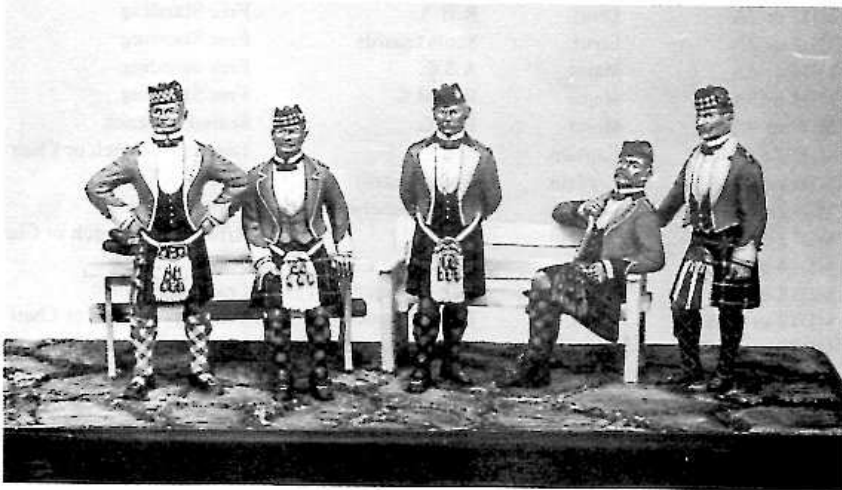
#### Additional Items

To assist the collector in the creation of realistic scenes, a small pack is available containing:

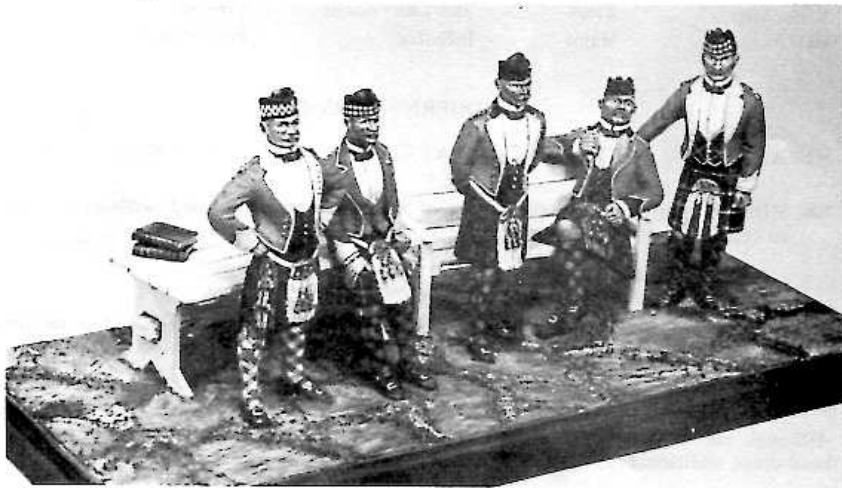
- 1 open book
- 1 closed book
- 2 tankards

Although the 'A' figures, i.e. those not wearing caps are supplied with separate appropriate head-dress, additional caps can be obtained in the form of a pack of five.

## Highland Officers Kilted Mess Dress



From left to right: MD29, Lieut. Argyll and Sutherland Highlanders; MD26, Captain, Gordon Highlanders; MD27, Lieut. Black Watch; MD28, Captain, Queen's Own Cameron Highlanders; MD30, Lieut. Seaforth Highlanders.



*Photos by courtesy of Military Modelling*

**ADDITIONS TO THE MESS DRESS SERIES  
HIGHLAND OFFICERS IN KILTED MESS DRESS, c1900**

The great popularity of the original Mess Dress Series, plus numerous requests for the 'Kilt' to be represented, resulted in these additional figures being produced. Our thanks are due to Bill Shirreffs of Aberdeen who, on our behalf, visited all the Regimental Museums concerned carrying out a detailed research programme.

The small vignette of 5 figures, Garden Table and Bench illustrated on facing page, won the Nicholson Trophy Award for commercial figures at the B.M.S.S. annual competitions in 1977 and has now joined "News from South Africa" on display in the Model Soldier Exhibition, Woburn Abbey.

MD26	Captain	Gordon Highlanders	Seated Table
MD27	Lieut.	Black Watch	Free Standing
MD28	Captain	Q.O.C. Highlanders	Seated Bench
MD29	Lieut.	A. & S. Highlanders	Free Standing
MD30	Lieut.	Seaforth Highlanders	Leaning Bench or Chair

The illustrations show our Highlanders posed as if about to be photographed. However, even with just five figures, an infinite number of different arrangements is possible, also, these can be intermixed with the earlier Mess Dress figures.

## **The Vignette Series**

Created especially to cater for the growing interest in the small scene and conversation piece. Each vignette consists of a pair of figures associated with a "Theme" object. Currently there are 14 of these sets, 13 Napoleonic (10 French, 3 British) and the remaining one is of the American Revolution period.

A group of these vignettes was awarded 2nd place in the Nicholson Trophy for commercial figures at the B.M.S.S. annual competitions for 1975 and all 14 can be seen painted at Woburn Abbey.

The French figures are based on the series of uniform plates by L. Rousselot. The more uncommon orders of dress being chosen, stable, working, walking out etc. . . .

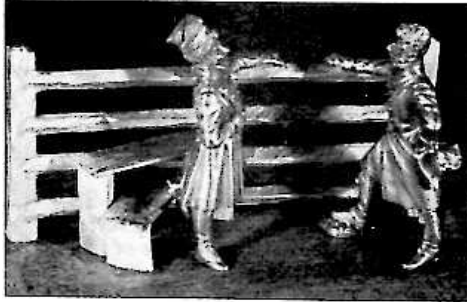
Many lend themselves to simple conversion to other regiments (in some instances, different colouring only is required) 14 such single figure conversions can be seen at the Model Soldier Exhibition.

Single figures can be supplied on demand to direct mail order customers, prices as for single Mess Dress figures, we are not, however, able to supply separate objects or accessories from this series.



# The Vignette Series

The first four, all incorporating the stile (section of fence and 2 steps) as the theme object.

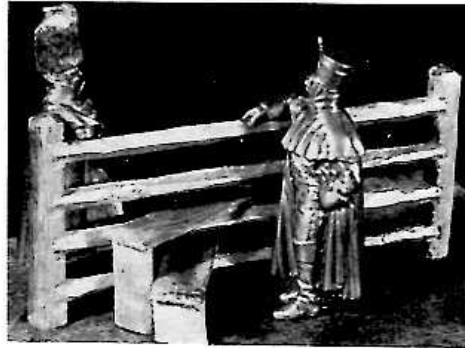


Cheveau-Legers-Polonaise. Chasseur a cheval. Officers in riding coats. c1812

◀ VFN1

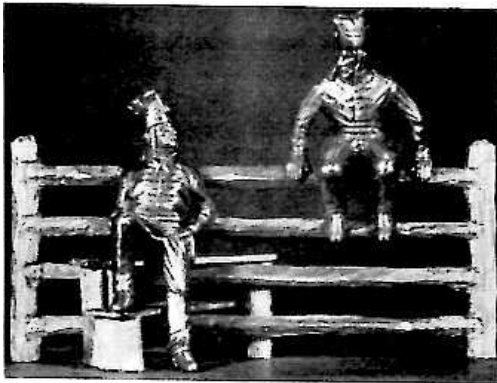
Train D'artillerie. Grenadiers a cheval. Soldier and Grenadier cloaked. c1813

VFN2 ▶



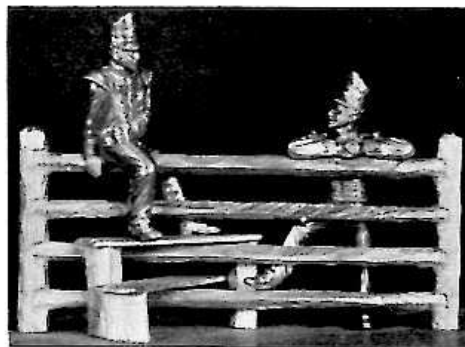
Hussars in stable dress. 1st and 3rd Regt's.

◀ VFN3



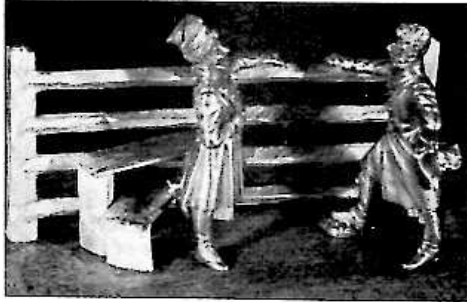
Privates. Light and Battalion companies. 35th foot.

VBN4 ▶



# The Vignette Series

The first four, all incorporating the stile (section of fence and 2 steps) as the theme object.

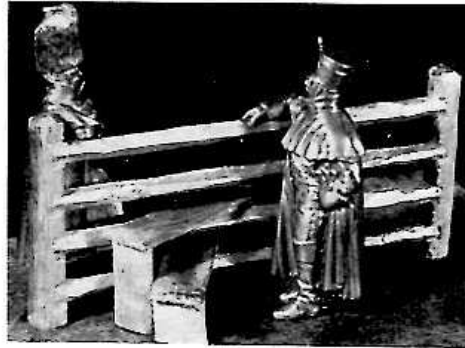


Cheveau-Legers-Polonaise. Chasseur a cheval. Officers in riding coats. c1812

◀ VFN1

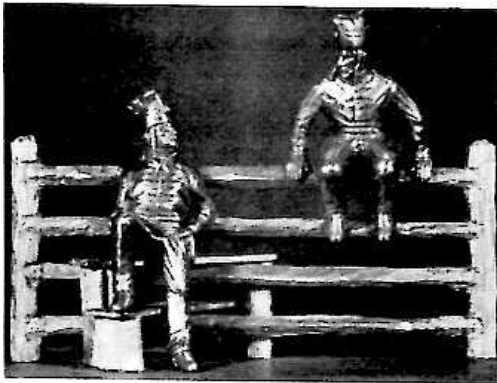
Train D'artillerie. Grenadiers a cheval. Soldier and Grenadier cloaked. c1813

VFN2 ▶



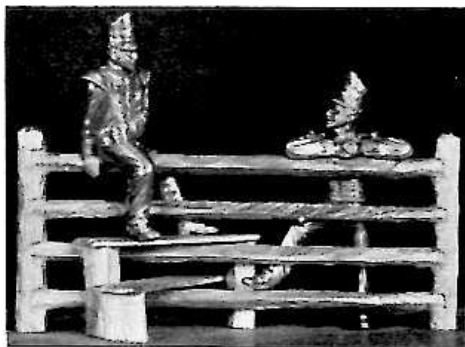
Hussars in stable dress. 1st and 3rd Regt's.

◀ VFN3



Privates. Light and Battalion companies. 35th foot.

VBN4 ▶



# The Vignette Series

The second four, using the tree stump as the theme object.



1st Carabiniers and 5th Hussar Regt's. Stable Dress. Can be combined with VFN3.

◀ VFN5

Sapeur, Grenadiers a pied de la garde, Canonier, Artillerie a pied de la Garde, tenue de ville. c1810.

VFN6 ▶



Privates. Black Watch and Gordon Highlanders BN. Coys. 1815.

◀ VBN7

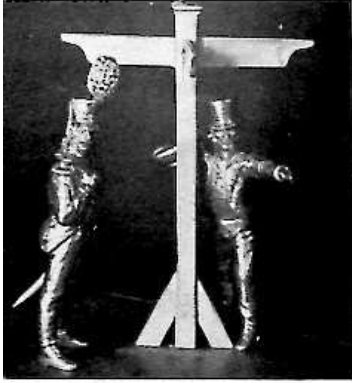
2nd Carabiniers, Trooper. 106th Regt. Fusilier. Stable/Working Dress. Can be combined with VFN3 and VFN5.

VFN8 ▶



## The Vignette Series

VFN9, 10 and 11 using the finger signpost as the theme object.



Lt.Inf. Carabinier and Equipment Train Waggoner 1804.

◀ VFN9

Lt.Inf. Voltigeur Corporal. Equipment Train Waggoner 1806.

VFN10 ▶



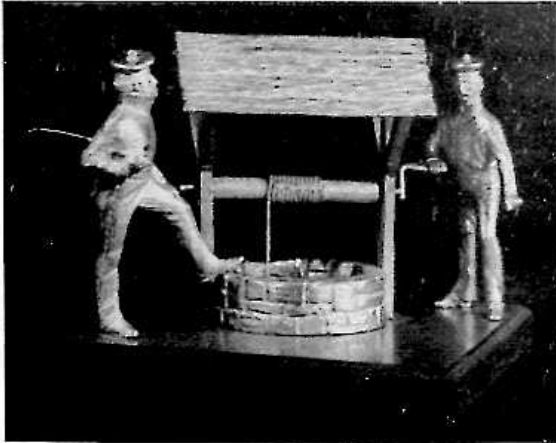
Grenadier and Fusilier Line Inf. in Greatcoats. 1814.

◀ VFN11

*Painted by and Photograph courtesy Alan Watson.*

## The Vignette Series

VBN12, VFN13 and VBAR14 using a different theme object in each case, respectively the well, combined barrel and crate and the felled tree.

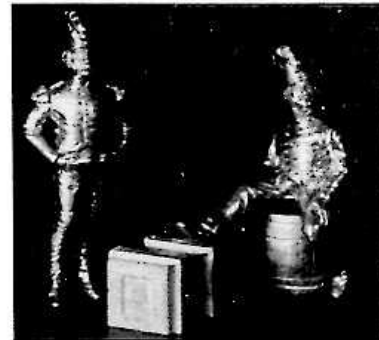


Sergeant, Walking out Dress & Trooper,  
Stable Dress. 1st. Dragoons  
(The Royals) 1815.

◀ VBN12

Marins de la Garde, Matelot, Boadress Line Inf.  
Voltigeur Quarters Dress 1813.

VFN13 ▶



British Soldiers in Canadian Winter Dress.  
American Revolution 1776.

◀ VBAR14



## The 'A' Range

A series of British Army figures at various times. Designed to allow scope for pairing and grouping.



Rifle Brigade, Rifleman. Review  
Order. c1850.

◀ A.1.

60th. Rifles (K.R.R.C.) Corporal,  
Review Order. c1850.

A.2. ▶



The above figures clearly indicate the difference in dress between these two Rifle Regt's at this date i.e. the long tailed coatee of the Rifle Bde. and the short jacket of the K.R.R.C.



Lieut. 86th. Foot. British Infan-  
try. Indian Mutiny, 1858.

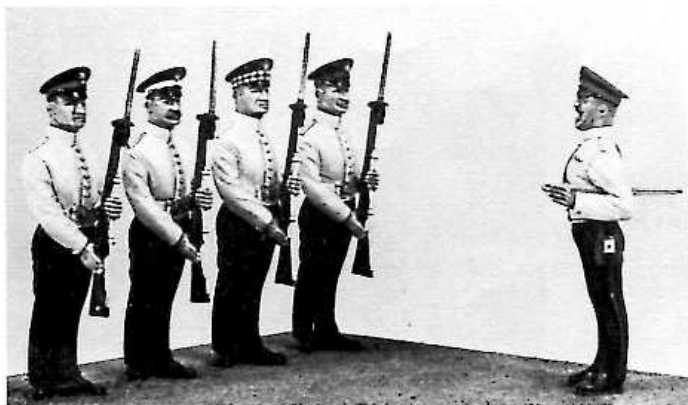
◀ A.3.

British Infantry Officer. Trench  
Kit, Indian Mutiny, 1858.

A.4. ▶



## The 'A' Range



A.5 GRENADIER GUARDS SGT.  
DRILL ORDER 1914.

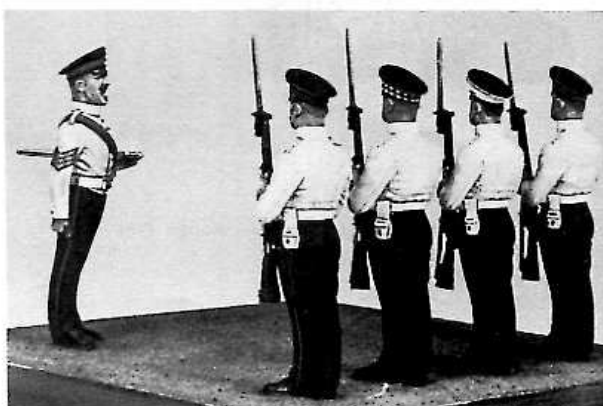
A.6 GRENADIER GUARDSMAN  
DRILL ORDER 1914.

Depicted in the photographs are A5, A6 and 3 minor conversions of A6 enabling the Coldstream, Scots and Irish Guardsmen to be included in the scene.

In each case conversion consists of filing off the grenade badge from the cap of A6 and painting in the 'Stars' of the other Regiments. Additionally in the case of the Scots Guards the chin strap has been filed off. Other Regimental differences are in colour only – the colour guide supplied with A6 gives details of all 4 Regiments.

If desired facial changes can be achieved quite easily. Skin tones and hair colour will go some way toward this, but as can be seen from the photographs, a more definite alteration is brought about by adding a moustache. Collectors adept at metal figure conversion could even alter the nose line or give a more pronounced hollow to the cheeks etc.

The 'Present Arms' position of A.6 lends itself to representation in the mass. If you want a Company, Platoon or Section, please send s.a.e. for special price quotation stating number of figures required.



*Photo's by courtesy of Military Modelling*

## The 'A' Range

A7/8 'That one's a Spad' an integral pair of figures comprising a Gunner, Royal Artillery and Private, Royal Flying Corps. World War I.



A9 English Yeomanry. West Kent (Sheppey). Officer. 1800.



A10 English Yeomanry. Surrey Private. 1800.

*Photos by courtesy of "Military Modelling"*



## The 'A' Range

The great popularity of A9 and A10 demanded that we produce more Yeomanry. The latest 4 illustrated below combined with the first 2 will make one of the most striking groups of 54mm figures available – a real plethora of colour.



East Lothian  
Private 1805

◀ A.11



South Bucks (Eton Troop)  
Officer. 1809

A.12 ▶



Leicestershire  
Officer. 1808

◀ A.13



Warwick Light Horse  
Private. 1801

A.14 ▶

*Photos by Courtesy of "Military Modelling"*

## **The 'N' Range**

Eventually, this will become a history of British naval dress in miniature model form. Already, it is the largest range of 54 mm British naval figures available in the world and we have every intention of making it larger, there are many many gaps to fill yet.

Most of the figures to date are based on the sets of cigarette cards "History of Naval Uniforms" issued by Carreras Ltd., and "History of Naval Dress" issued by John Player & Son. The artists concerned drew extensively on original material from the Maritime Museum. Consequently, the cards are considered to be very accurate portrayals of the dress of the period.

Some of the later figures are based on illustrations from the Blandford colour series book "Naval, Marine and Air Force Uniforms of World War II" or actual photographs supplemented by the "Naval Ratings Handbook".

We would like to take this opportunity of placing on record our thanks and appreciation for the help and encouragement given by our good friends Kenneth Fenwick, Stuart Betts and Keith Webber and also to thank those many customers who have written to us expressing their delight that at long last our Senior Service is receiving its rightful share of the modelling scene.

## The 'N' Range



British Naval Seaman. c.1663. (Base not included).  
A seaman of the Restoration period when the term 'Royal Navy'  
first came into use.

◀ N.1

British Naval Seaman. c.1845.  
(base not included).  
A seaman of the 'steam trials' period.

N.2 ▶



A British Naval Officer. c.1651. (Base and Rail not included).  
Typical Officer of the Cromwellian period.

◀ N.3

British Naval Seaman. c.1744. (Base not included).  
A sailor on shore leave during the period of Lord Anson's admin-  
istration.

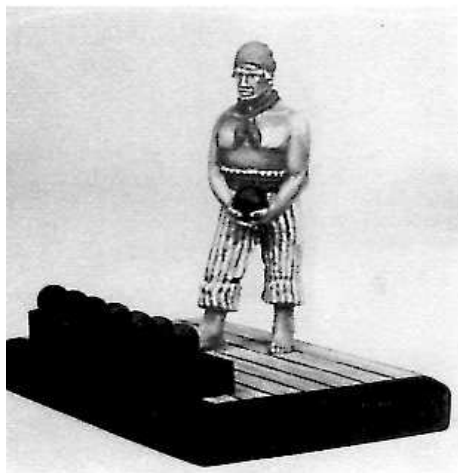
N.4 ▶



*Photos by courtesy of "Military Modelling"*

## The 'N' Range

N.5 BRITISH NAVAL SEAMAN, c.1588



BRITISH NAVAL GUNNER, c.1805  
England expects that every man will do his duty".  
Gunner stripped for action at the time of Trafalgar.

N.7 BRITISH NAVAL MIDSHIPMAN, c.1776  
A bi-centenary figure but also the uniform worn in  
the wars with France, Spain and Holland.



N.8 BRITISH SEAMAN, 1480  
A sailor of the reign of Edward IV, wearing the dress  
common to that period.

*Photos by courtesy of "Military Modelling"*

# The 'N' Range



N9 SEAMAN c.1861



N10 SEAMAN c.1500



N11 GUNNER c.1750



N12 BOATSWAIN c.1828



N13 SEAMAN c.1854



*Photos by courtesy of Military Modelling*

# The 'N' Range



SEAMAN (Staff Slinger) C.1227

◀ N.14

MASTER MARINER c.1740

N.15 ▶



LORD ANSON'S BARGE CREW c.1743

◀

FLAG OFFICER c.1833

N.17 ▶



COXWAIN WW2

◀ N.18

LEADING SEAMAN c.1970  
No.1 DRESS No.6 DRESS

N.19 ▶



## The 'JG' Range

So far all the figures listed have been from the hand of Ensign's figure designer Bob Rowe. These are the first figures from our new designer John Goddin, son-in-law and protege of the above mentioned. John is ex. R.N. with an engineering Background and lots of good imaginative ideas so we are expecting great things from him.



◀ JG.1/2

JG.3 ▶



*Photos by courtesy of "Military Modelling"*

**ANSWERS TO SOME OF THE QUESTIONS FREQUENTLY ASKED BY OUR CUSTOMERS**

**YES,** The painted Figures appearing in "Military Modelling" reviews and our catalogue supplements are painted by the designer, in oils, Humbrol, Plaka and Japlac, using a 00 brush.

**NO,** We cannot supply the bases used for the above but a good supply of bases can be obtained from a 6' x 2" length of mahogany, cut into 2" pieces.

**YES,** the groundwork (highly recommended as it will enhance the figure) is largely natural material grit, sand, moss, lichen etc and in the case of 'N' range figures frequently lines scribed into the base to represent deck planking.

**NO.** Bob Rowe is unable to paint figures on a commission basis being currently too busy producing new Ensign figures.

**YES,** we are prepared to supply painted Ensign figures. These would be passed to an artist for completion of the work; approx 6 weeks delivery. Price depends on complexity; write for quotation - s.a.e. please.

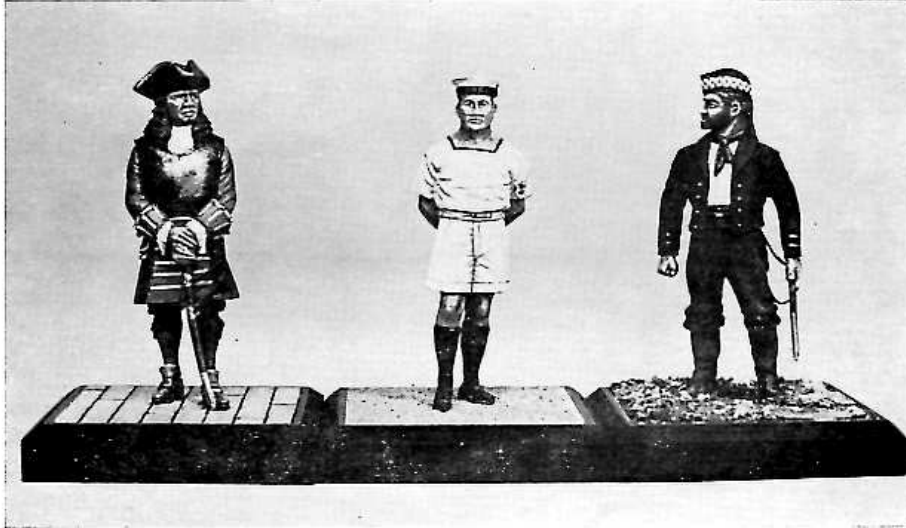
**NO,** we are unable to supply "Rowe" figures, these were produced and marketed 1969-70 and are no longer available.

**YES,** we did some years ago stock "The Vallance Collection" (the figures were designed by Bob Rowe and son) Cavalier miniatures of New York now own all the master designs and moulds and this U.S. firm are in process of re-releasing the original 12 figures (first marketed 1972) and releasing for the first time the remaining 17 figures. Enquiries direct to Cavalier Miniatures please.

**YES,** our policy is to release new "Ensign" products twice yearly, Spring (Apr/May) and Autumn (Oct/Nov) subject of course to circumstances beyond our control.



## The 'N' Range



N. 20  
ADMIRAL c. 1704

N. 21  
L/SEAMAN c. 1941

N. 22  
LIEUT. NAVAL BDE.  
CRIMEA 1854



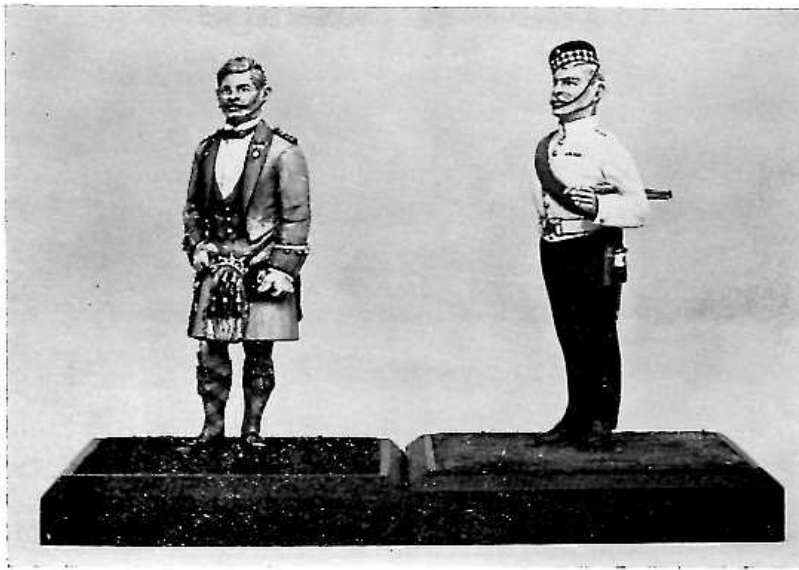
N. 24  
L/SEAMAN c. 1943  
NAVAL BEACH PARTY

N. 23  
SIGNALMAN c. 1943

*Photos by courtesy of "Military Modelling"*

MESS DRESS SERIES

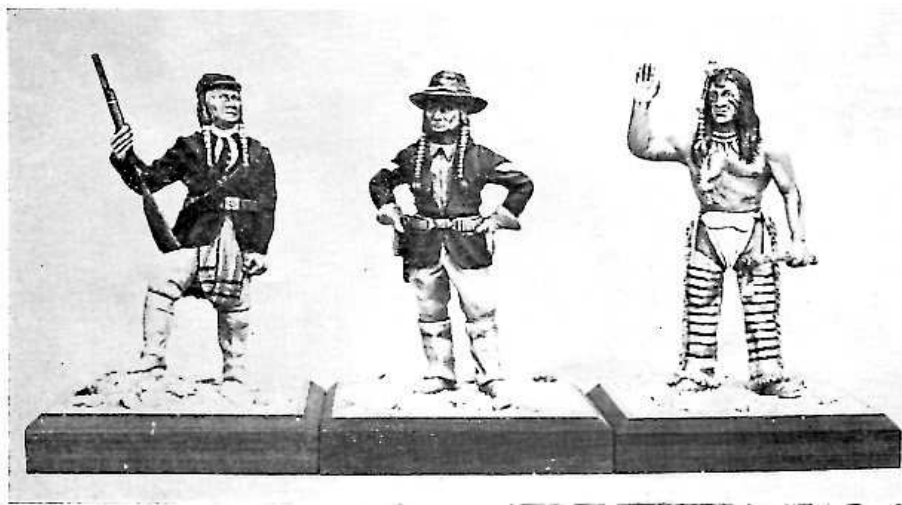
THE 'A' RANGE



MD. 31  
LIEUT.  
THE LONDON SCOTTISH

A. 15  
GUARDS SGT.  
DRILL ORDER c. 1895

THE 'JG' RANGE



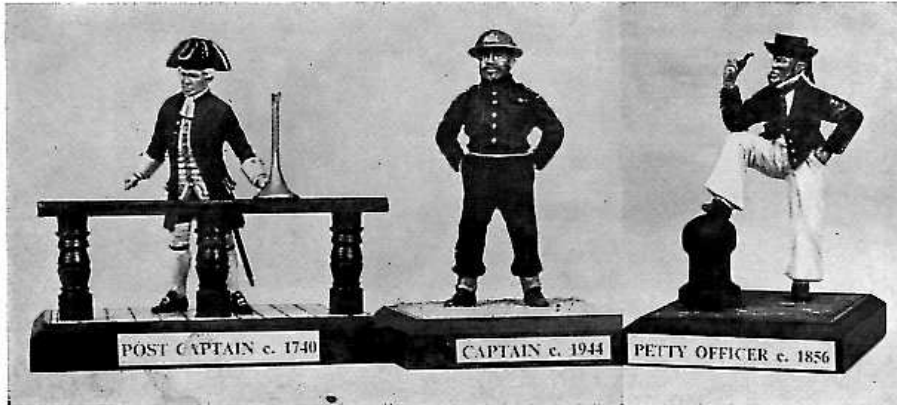
JG 4  
1st ARIZONA VOLUNTEER  
INFANTRY 1865

JG 6  
U.S. INDIAN SCOUTS  
CPL. 1890

JG 5  
CROW INDIAN WARRIOR  
MID 19th CENTURY

*Photos by courtesy of "Military Modelling"*

## The 'N' Range



N. 27  
POST CAPTAIN c. 1740

N. 25  
CAPTAIN c. 1940  
SENIOR NAVAL OFFICER  
LANDING

N. 26  
1st CLASS PETTY  
OFFICER c. 1856

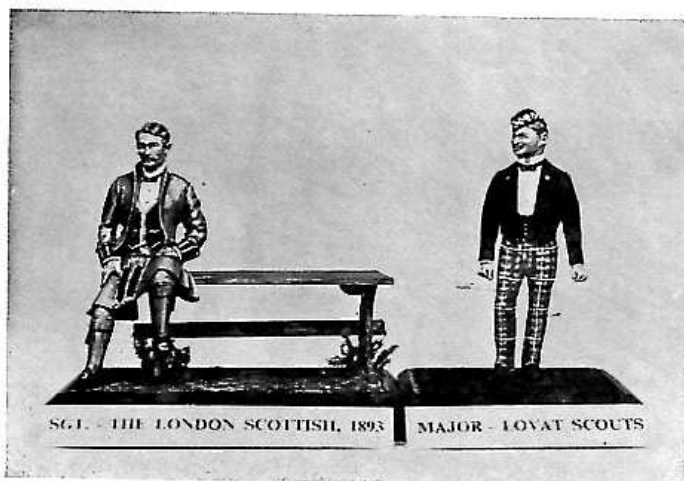


N. 29  
SEAMAN c. 1780

N. 28  
SEAMAN c. 1798

N. 30  
DRUM MAJOR  
H.M.S. GANGES c. 1936

MESS DRESS SERIES



MD. 32  
SGT., THE LONDON  
SCOTTISH, 1893

MD. 33  
MAJOR, THE LOVAT  
SCOUTS. c. 1900

THE 'A' RANGE

THE 'JG' RANGE



A. 16  
SCOTTISH YEOMANRY  
AYRSHIRE SGT. c. 1802

JG 7  
AMERICAN INDIAN  
GHOST DANCER c. 1890

[Supplement No. 2 Autumn 1978]

## The 100mm Series

Another member of the family joins the Ensign design team, son Sgt. Bob Rowe, Royal Hussars, who will specialise in larger figures. The first (illustrated below) is No. 1 in a proposed group of Civil War types. A Standard Bearer and a Pikeman are in the pipeline, completion depends somewhat on the exigency of the service but we hope to produce at least one of these for release spring '79. Bob is not new to figure sculpting, having designed twelve of the excellent "Vallance Collection" figures for an American company some years ago and several 100mm. figures since then. It must also be said that he is an artist par excellence.



RWR/1

LIEUTENANT, BLUECOAT REGIMENT 1642 - 1644

## The 'UD' Series

The first of a new series of British Army figures, these four Hussar officers wearing the very attractive patrol jacket, each accurately sculptured to represent the regiment portrayed, c. 1900.



UD 1 CAPT. 4th (QUEEN'S OWN) HUSSARS    UD 3 CAPT. 13th HUSSARS  
UD 2 LIEUT. 11th (PRINCE ALBERT'S OWN) HUSSARS    UD 4 LIEUT. 15th (KING'S) HUSSARS

## The 100mm Series

The second offering in this series by S/Sgt. Bob Rowe, a colour bearer. Here painted as Lamplugh's Regt., but admirably suited for the portrayal of numerous other regiments.



RWR/2  
ENSIGN, LAMPLUGH'S REGIMENT OF FOOT, 1644

Photos by courtesy of "Military Modelling"

## The 'N' Range



N. 31  
SAXON BUSCARLE  
10th CENTURY

N. 32  
MIDSHIPMAN  
c. 1808



N. 33  
SEAMAN, NAVAL BRIGADE,  
ZULU WAR, 1879

N. 34  
PETTY OFFICER  
c. 1977

N. 35  
JUNIOR RATING  
W.R.N.S. c. 1977

*Photos by courtesy of "Military Modelling"*