

S.E.G.O.M.

54mm SPARES CATALOGUE (English Edition)



51



89



90



100



116



128



129



86



99



80



81



82



113



83



53



92



109



112



110



117



87



120



91



98



118



119



122



123



138



124



125



126



127



130



132



131



52



134



133



136



137



135



139



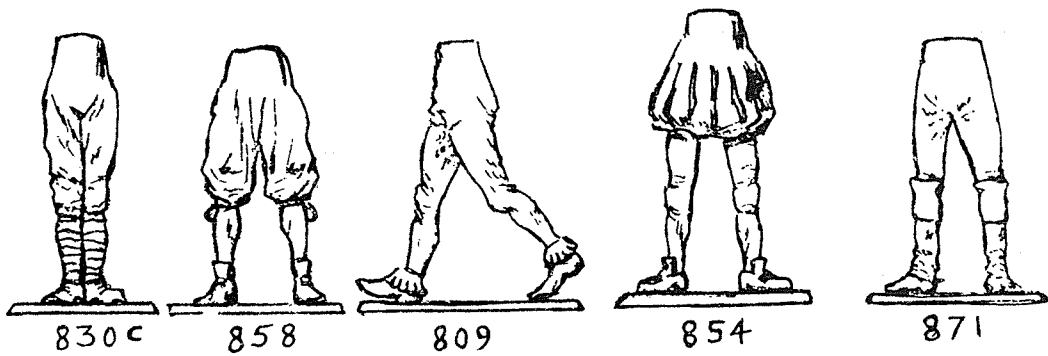
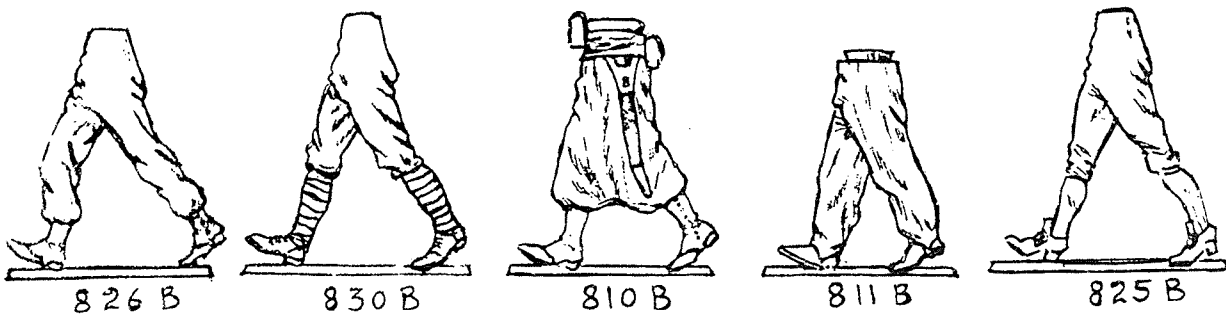
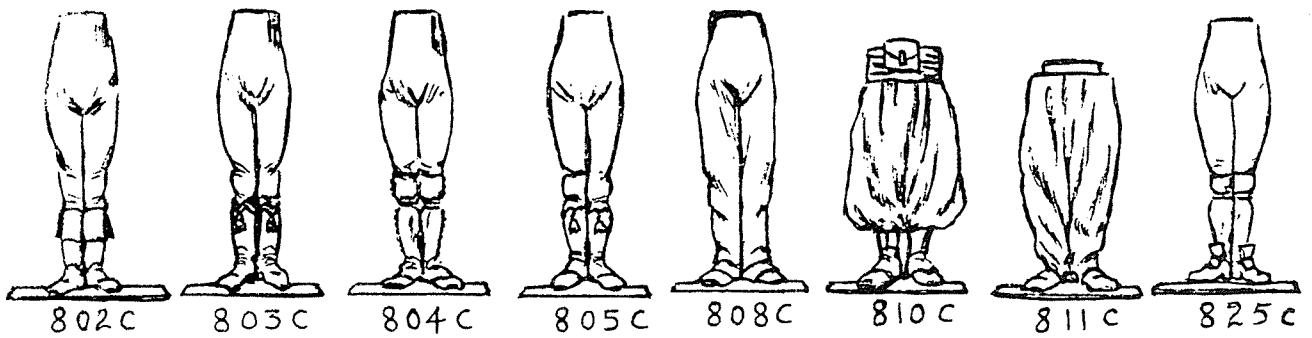
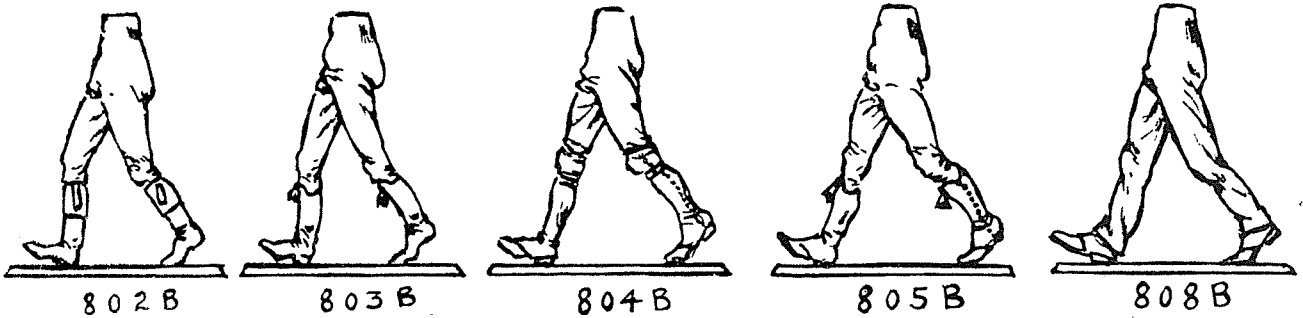
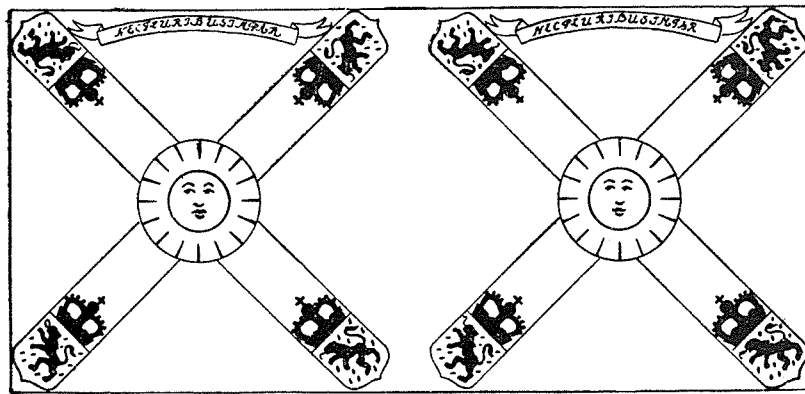
140

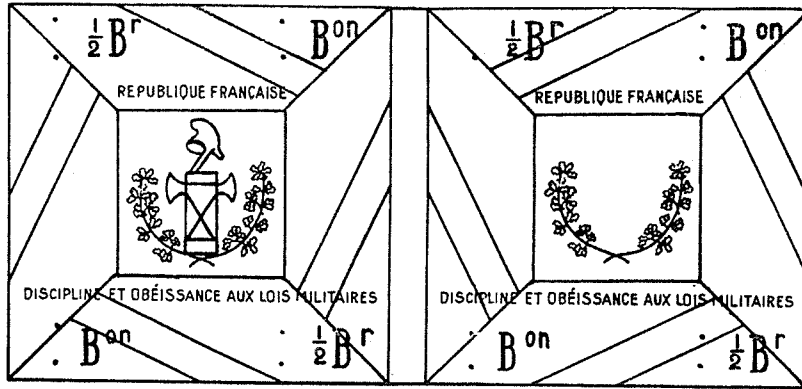


50

Model Figures & Hobbies

Lower Balloo Road, Groomsport, Co. Down BT19-2LU N. Ireland.





700



701



714



704A



706



770



707



702



703



704B



705



710



711



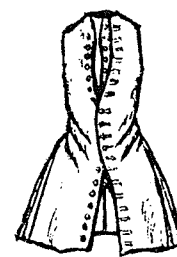
728



731



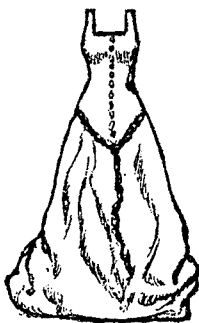
726



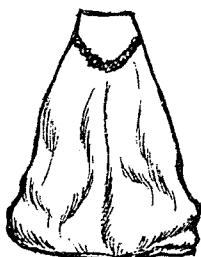
725



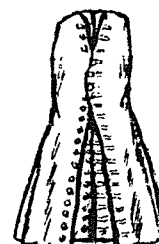
753



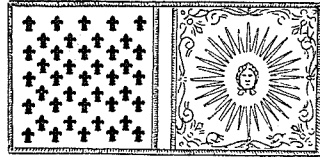
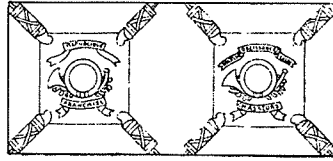
498A



498B



723



737A



737B



739



749



745



747



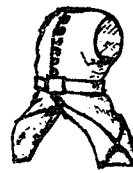
741



712



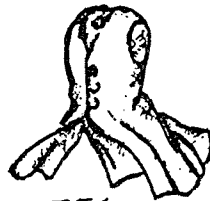
743



727



748



756



857



813



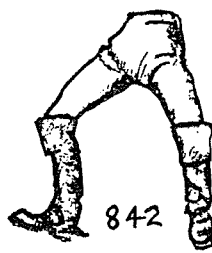
828



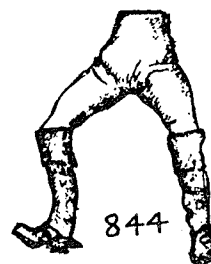
838



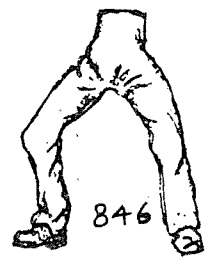
840



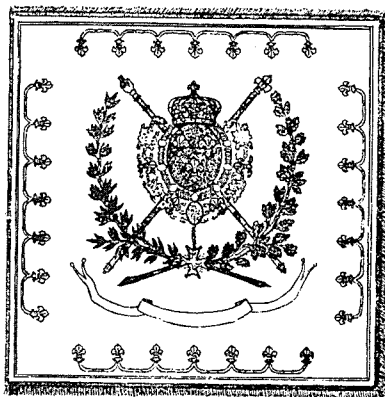
842



844



846



281



278



279



269



259



255



267



268



949



950



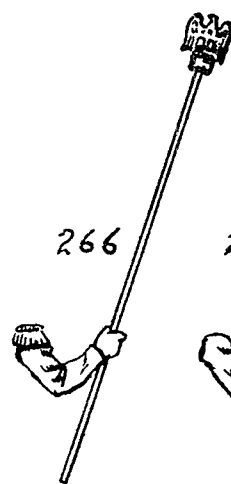
951



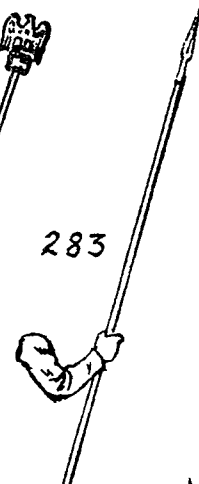
952



956



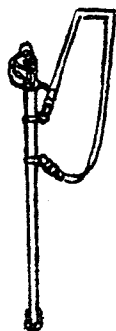
266



283



958



959



964



965



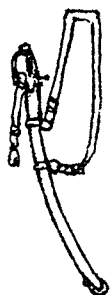
957



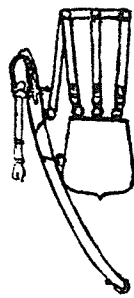
984



963



953



954



955



982



974A



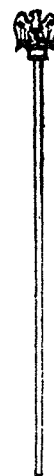
974B



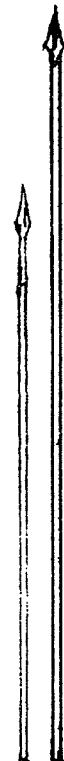
983



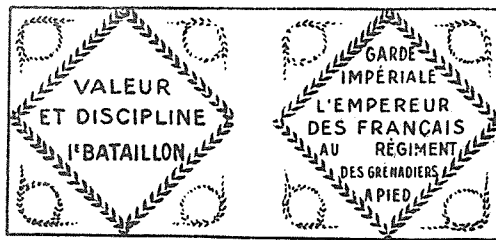
961



962



A B
960



400



401



402



472



471



410



485



411



403



404



413



414



415



416



421



422



499



417



408



447



418



419



448



406



407



409



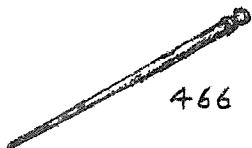
468



469



470



466



467



481



480



479



478



475



473



477



476



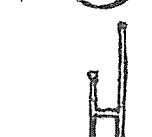
934



932



937



928A+B



930



925



931



924



920



927A+B



923



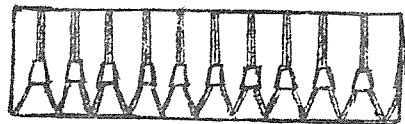
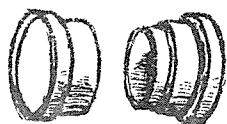
926



933



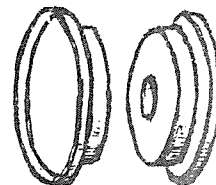
929A+B

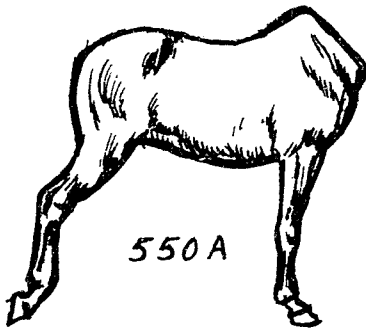
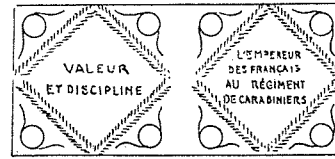
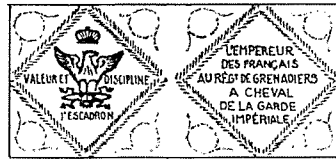


935 A+B

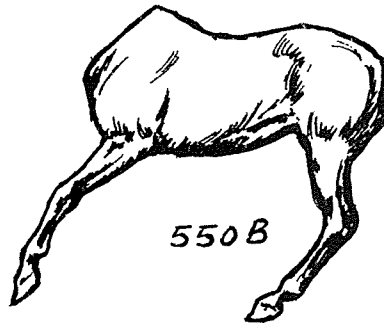


936





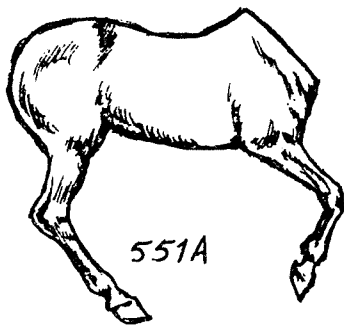
550A



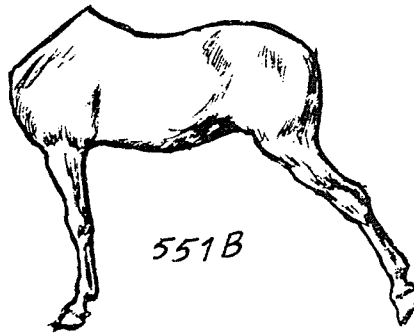
550B



500



551A



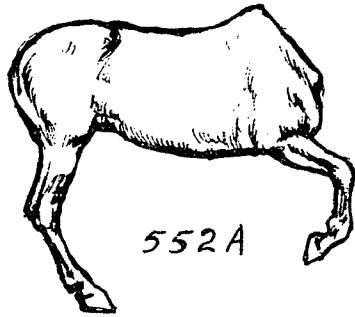
551B



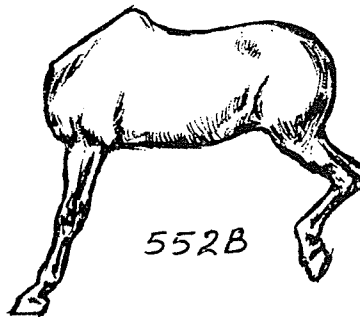
501



502



552A



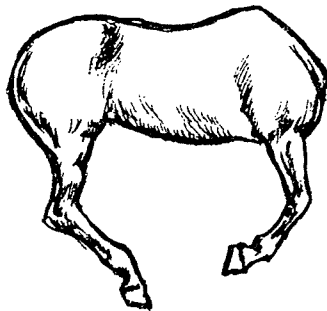
552B



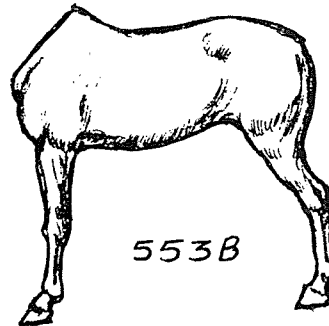
503



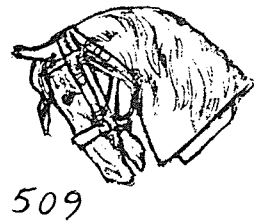
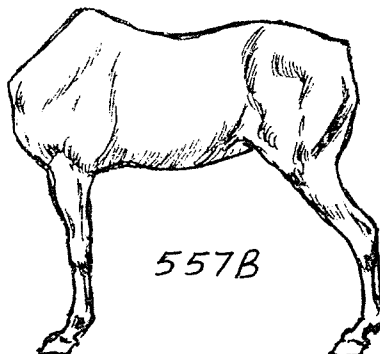
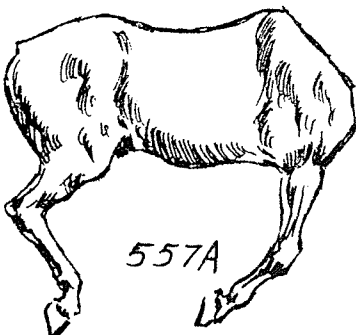
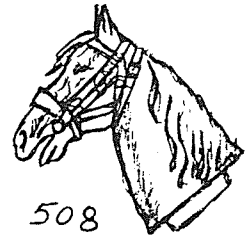
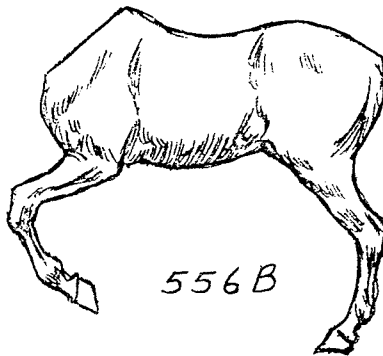
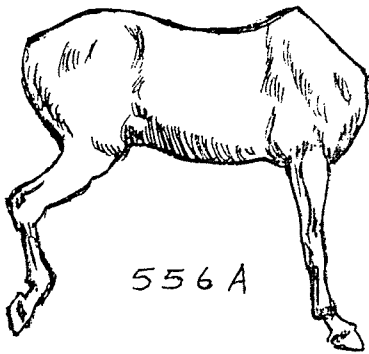
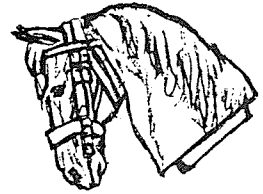
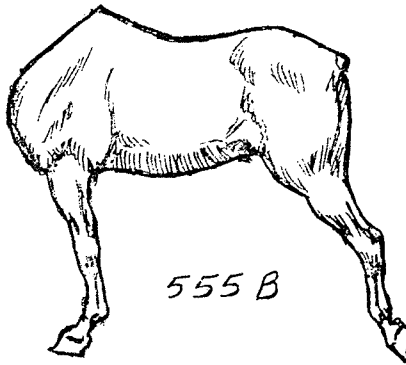
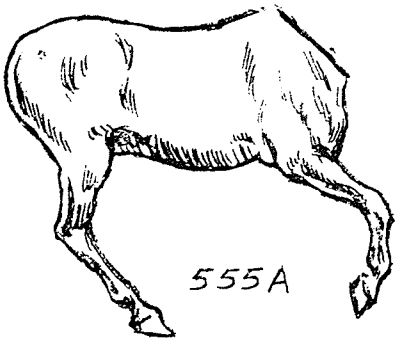
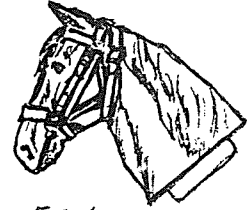
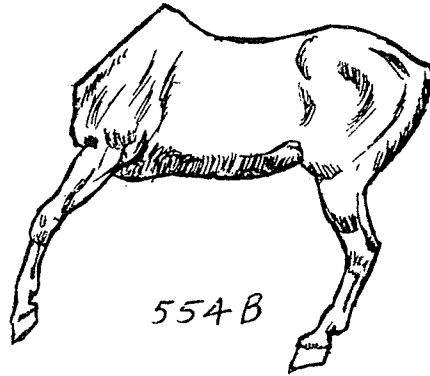
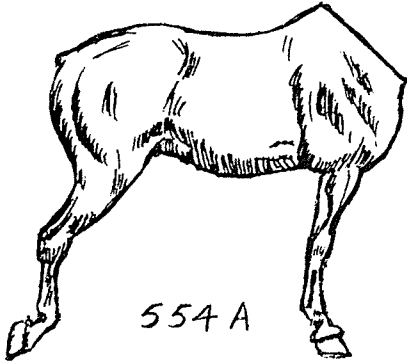
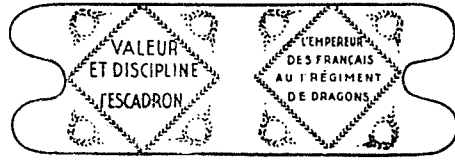
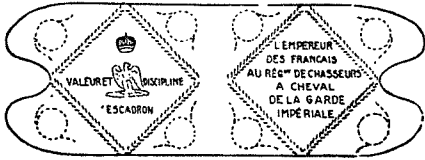
504

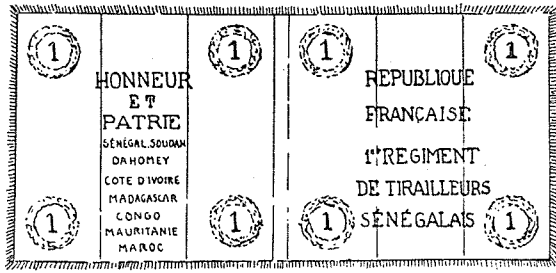


553A

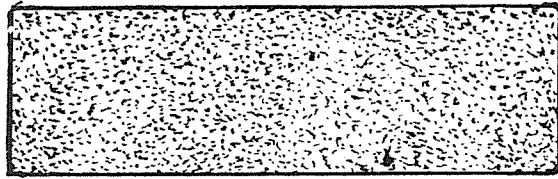


505





547



549



548



600



604



601



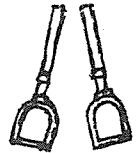
623



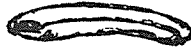
602



622



620



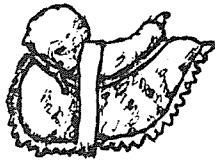
619



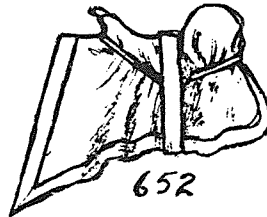
621



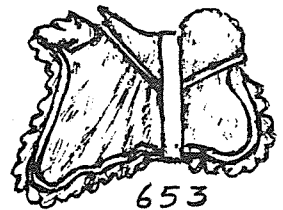
650



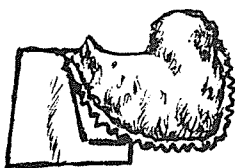
651



652



653



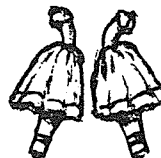
655



657



658



659



656

SEGOM ----- SPARES

This range of spares is moulded in plastic to 54mm scale, is one of the largest ranges available. 275 separate items are listed, most of which are illustrated in detail. With this range most Napoleonic figures can be created, also a wide selection in other periods.

ADHESIVE. Acetone will bond all SEGOM spares and can be used in conjunction with most metals & plastics.

CONVERSIONS. Shaping & bending can be easily carried out, by immersion in hot-water. The Plastic will not shred and can be cut and carved as wood.

ORDERING. State list number, description and quantity, in that order.

LIST NO. Head-dress have head included, unless otherwise stated.
PRICE CODE D.

- | | |
|---|--|
| 50-Lady's Tudor Style, no head | 121-Deleted (no longer available) |
| 51-Louis XIV late 17th Cnty. | 122-Cuirassier Helmet 1st Empire |
| 52-Henry IV of France, with ruff | 123-Carabinier Helmet 1st Empire |
| 53-Napoleon 1st | 124-Turbaned Fez Negro Head
1st Empire |
| 80-Prussian Hussar 1815 Trooper | 125-Turbaned Fez Negro Head
1st Empire |
| 81-Prussian Hussar 1815 Officer | 126-Mameluk 1st Empire |
| 82-Austrian Double peak shako | 127-Rustan, plain Turban
1st Empire |
| 83-Belgic Shako 1815 | 128-Bicorne General Officer
1st Empire |
| 86-Broad Brimmed with hair, no head | 129-Bicorne Marshal 1st Empire |
| 87-Round Fur Cap 17th Cnty. no head | 130-Zouave Private 1870 1st Empire |
| 89-Tricorn Louis XIV, Seven Years War | 131-Kepi 1870-1914 |
| 90-Tricorn Louis XV, War of Independance | 132-Fez Algerian Tirailleur
(will suit German Handscar Divn.) |
| 91-Dragoon Helmet XV, War of Independance | 133-Monaco Carabinier Helmet
no head |
| 92-Bearskin with Plate pre-revolution | 134-Bare Head, no hair. To
suit Nos. 133-135-136-137 |
| 98-Tarleton Helmet R.H.A. 1815 | 135-American Helmet no head
1941-45 |
| 99-Mirliton 1750-95 two plumes | 136-French Helmet 1916-1939 no
head |
| 100-Bicorne Revolutionary period 1798 | 137-German Helmet 1939 no head |
| 109-Bearskin without plate 1st Empire | 138-Garde Republican Helmet |
| 110-Bearskin with Peak 1st Empire | 139-Head with hair and stock.
To suit Nos. 86-87-140 |
| 112-Bearskin with Plate 1st Empire | 140-Gentlemans Hat 1st Empire
no head |
| 113-Shako with Plume 1st Empire | |
| 116-Drummajor Bicorne with queues | |
| 117-Colback with two plumes 1st Empire | |
| 118-Dragoon Helmet 1st Empire | |
| 119-Chevau-Leger Helmet 1st Empire | |
| 120-Czapka 1st Empire, lancer cap | |

PARTS PRICE CODE

A = 6p	D = 12p	I = 22p	N = 63p
B = 7p	E = 14p	J = 24p	
C = 10p	F = 18p	K = 42p	

MINIMUM ORDER 25p

POST AND PACKING ADD 10% : MINIMUM POSTAGE 12p

OVERSEAS EXTRA

WHEN ORDERING STATE, PART NUMBER, DESCRIPTION & PRICE, PLEASE.

WHEN POSSIBLE GIVE ALTERNATIVE PART, AS SOME ITEMS MAY NOT BE

BODIES FOR FOOT FIGURES

LIST NO.

PRICE CODE D.

700-Drummer Line Infantry French 1st Empire
 701-Drummer Light Infantry French 1st Empire
 702-Officer Line Infantry French 1st Empire
 703-Officer Light Infantry French 1st Empire
 704a-Sapper " " "
 704b-Private Line Infantry " " "
 705-Private Light Infantry " " "
 706-Musician " " "
 707-Louis XIV & XV late pattern
 710-Zouave Jacket Private
 711-Zouave Officer's Jacket
 714-Surtout, plain jacket
 726-Modern Uniform Jacket
 729-French World War I pattern
 753-Elizabethan ribbed jacket

723-Late 17th Cnty.

PRICE CODE E.

725-Early 18th Cnty.

731-French Greatcoat 1914-1939 pattern

770-Napoleons Riding Coat open

498a-Tudor type dress (Front section)

PRICE CODE F.

BODIES FOR MOUNTED FIGURES

LIST.NO.

PRICE CODE D.

712-Mameluk
 727-Garde Republican, plain
 739-Dolman, Hussar type with sash
 741-Dragoon type 1st Empire
 743-Marshal or Senior Officer 1st Empire
 745-Kurtka, Lancer type, belted 1st Empire
 747-Chevau Leger type
 748-Light Cavalry type
 749-Dolman, Hussar type without sash

737a-Cuirass front section

PRICE CODE E.

737b-Cuirass back section

756-Plain Riding Coat, Louis XIV & XV period

LEGS FOR FOOT FIGURES

PRICE CODE E.

All are made in pairs, attached to base, for conversions marching legs are best as these can be removed from base and cut apart at fork then shaped as required.

No. MARCHING

ATTENTION

802b-Turned over boots, Infty off.	802c-as 802b but at attention.
803b-Tassled boots, Lt. Infty. off.	803c-as 803b " " "
804b-High gaiters, above knee	804c-as 804b " " "
805b-Tasseled gaiters, Lt. Infty.	805c-as 805b " " "
808b-Long plain trousers, suit most periods	808c-as 808b " " "
809-Drum-Major, Grenadiers of the Guard	810c-as 810b " " "
810b-Zouave trousers, half gaiters	811c-as 811b " " "
811b-Zouave off. type, no gaiters	825c-as 825b " " "
825b-Gaiters above knee, 18th Cnty.	830c-as 830b " " "
826-Plain, ankle gaiters, French 1914 or U.S. 1939	
830b-Plain with puttees to knee W.W. I	

STANDING AT EASE

PRICE CODE E.

854-Elizabethan Gentleman

858-Trousers with knee stockings, buckle shoes.

871-Plain trousers, high cavalry boots with knee cuff.

LEGS FOR MOUNTED FIGURES

PRICE CODE E.

LIST NO.

- | | |
|---------------------------------------|---|
| 813-Mamaluk pattern | 842-Plain trousers, long boots, knee cuff |
| 828-Riding breeches, knee boots | 846-Long plain trousers, lancer etc. |
| 838-Plain trousers, long riding boots | 857-18th Centy. Heavy cavalry boots |
| 840-Plain trousers, Hussar boots | |

SWORDS & MUSKETS ETC.

LIST NO.

- 949-Bayonet in frg. French 1914
 950-Infantry sword & bayonet 1st Emp.
 951-Straight dress sword 1st Empire
 952-Curved line officers sword 1st Emp.

PRICE CODE A.

- 955-Mameluk pattern sword in scabbard
 974a-Head of officers espartoon 18th Centy.
 974b " " N.C.O's " " "
 982-Flintlock pistol
 983-Head of scythe, French Revolution
 984-Head of pitchfork, French Revolution

PRICE CODE B.

- 953-Light cavalry curved sword in scabbard
 954-Light cavalry curved sword with sabretache
 956-Cavalry carbine, flintlock 1st Empire
 957-Musket with fixed bayonet 1st Empire
 958-Heavy cavalry sword, drawn 1st Empire
 959-Heavy cavalry sword in scabbard 1st Empire
 963-Light cavalry sword curved, drawn 1st Empire
 964-Tudor sword in scabbard
 965-18th Centy. sword in scabbard

PRICE CODE D.

ARMS RIGHT-ARMS in various positions

PRICE CODE B each arm.

LIST NO.

- | | |
|--|--|
| 323-Large cuff, hand open, straight out | 353-Plain, bent for standard |
| 324-Large cuff, hand open, straight down | 354-Plain gaunt, epau, for Std. or lance |
| 327-Large cuff, hand closed, right angle | 358-Drummers, epau & drumstick |
| 332-Hand in vest, Napoleon 1st | 360-Sappers, gauntlet & axe |
| 335-Elizabethan, holding hat | 361-Officer infantry, sword on shoulder |
| 336-Hand open, straight out ribbons | 362-Light cavalry, sword on shoulder |
| 338-Tudor ladies, hanging cuff | 363-Plain, to hold lance or std. |
| 340-Large cuff, to hold standard | 365-Plain, to hold reins |
| 341-Plain, gauntlet, for lance or std. | 371-Plain, epaulette, to hold reins. |
| 343-Plain, gauntlet for sabre | 375-Plain, straight down, hand open |
| 344-Plain, gauntlet, epaulette, bent | 384-Plain, gauntlet, bent for trumpet |
| 345-Bent for French horn | 385-Plain bent for trumpet |
| 346-For tenor drum or cymbal | 388-For Basson or Serpent player |
| 348-Plain, gaunt, coau, for sabre | 390-For Fife or Flute player |
| 350-Plain, epau, straight, hand open | 394-Drum-Majors, slightly bent |
| 352-Plain, bent on hip | 395-For Trombone player |

PRICE CODE B. each arm

LEFT-ARMS in various positions

LIST NO.

- | | |
|---------------------------------------|--------------------------------|
| 322-Large cuff, straight down | 364-Plain, bent to hold reins |
| 325-Large cuff, slightly bent | 372-With epaulette for reins |
| 333-Holding riding crop | 374-Plain straight down |
| 334-Elizabethan, holding gloves | 387-For clarinette |
| 337-Louis XIV, holding reins | 389-For basson or serpent |
| 339-Tudor ladies, hanging cuff | 391-For fife or flute player |
| 342-Plain, gauntlet, to hold reins | 392-Drum-Majors to hold mace |
| 347-For tenor drum or cymbal | 393-Plain, bent on hip |
| 349-With epau, gauntlet, for reins | 396-For trombone player |
| 351-With epaulette, straight down | 397-For horn or serpent player |
| 357-Drummers with epaulette and stick | |

ARMS WITH WEAPONS ATTACHED

PRICE CODE E. each arm

List No.

- 255-Left arm, epaulette with musket slung, 1st Empire
- 259-Left arm, epaulette gauntlet, with musket slung, 1st Empire
- 266-Right arm, epaulette, holding flag staff 1st Empire
- 267-Left arm, epaulette, musket shouldered, 1st Empire
- 268-Left arm, epaulette musket in crook of arm, 1st Empire
- 269-Left arm epaulette, musket shouldered, held at trigger guard
- 278-Right arm, plain, La Belle rifle, shouldered. 1900
- 279-Right arm, plain, La Belle rifle, held at trigger guard. 1900
- 281-Right arm, plain, La Belle rifle, shouldered. 1914
- 283-Right arm, plain, flagstaff 19th & 20th Centy.

LANCES & FLAGSTAFFS STEEL with shaped tops

PRICE CODE D.

List No.

- 960a-Lance 8 cm or 3 $\frac{1}{4}$ " long
- 960b-Lance or staff for large type standard 10 cm or 4" long
- 961- Flagstaff, Fleur de Lys head, 18th Centy. type 7 cm or 2 $\frac{3}{4}$ " long
- 962- Flagstaff, Eagle of the 1st Empire, 7 cm or 2 $\frac{3}{4}$ " long

MUSICAL INSTRUMENTS

PRICE CODE B.

List No.

- | | |
|------------------------|--|
| 923-Trumpet with cords | 931-Drum Majors Mace |
| 924-Pair of Cymbals | 932-Clarinet |
| 925-Serpent | 933-Fair of Drum beaters, all drums except 920 |
| 926-French Horn | 934-Bugle with cords |
| 930-Basson | 937-Light infantry Cornet |
| 920-Side drum | |

- 927-Jingling Jonnie 2 Parts
- 928-Trombone 2 parts

PRICE CODE E.

- 936-Pair of Kettle drums

PRICE CODE F.

- 929-Bass drum of the Imperial Guard 3 parts

PRICE CODE J.

- 935-Bass drum of the Line, will also suit 18th cent. side drum

CAVALRY HORSES

- | | |
|---|---------------------------------------|
| Complete Horse, Light cavalry, PRICE CODE K | Complete Horse Hvy.Cav. PRICE CODE N. |
| Horse half " " " " E | Horse half " " " " I. |
| " head " " " " B | " head " " " " E. |
| " tail " " " " A | " tail " " " " A. |

HORSE AND SADDLE FURNITURE

LIST NO. LT. CAVALRY

HEAVY CAVALRY

- | | |
|--|-------------------------------------|
| 600-Small bridle & reins PRICE CODE B. | 602-Bridle with reins PRICE CODE D. |
| 601-Large bridle & reins " " " " | 604-Breast Harness " " A. |
| 620-Round Portemanteau " " " " | 619-Folded cloak " " B. |
| 623-Oval stirrups (pair) " " " " | 621-Sq. portemanteau " " B. |
| | 622-Round stirrups (pair) " " B. |

PISTOL HOLSTERS CAVALRY PATTERN

SADDLES & SADDLE CLOTHS

- | | |
|--|---------------------------------|
| 657-Two cover type PRICE CODE D (pair) | 650-Sheepskin PRICE CODE D. |
| 658-Three cover type " " 5" " | 651-Sheepskin " " D. |
| 659-18th Centy. type " " " " | 652-Cloth 1st Empire " " E. |
| | 653-Pantherskin & head " " E. |
| | 655-Sheepskin & cloth " " E. |
| | 656-Plain saddle & cloth " " E. |

ACCESSORIES

PRICE CODE A.

LIST NO.

- | | |
|-------------------------------------|---|
| 403-French waterbottle 20th Centy. | 411-Cartridge box, 18th Centy. 1st Emp. |
| 404-Small flask | 413-Tape for belts etc. narrow |
| 406-Beard for Sappers etc. | 414- " " " " wide |
| 407-Raquette for Shako etc 1st Emp. | 415-Furry strip for Bicornes, Tricornes, etc. |
| 408-Eagle for Standard " " " | 416-Waist sash |
| 410-Cartridge box, 18th Centy. | 418-Pair fringed epaulettes |