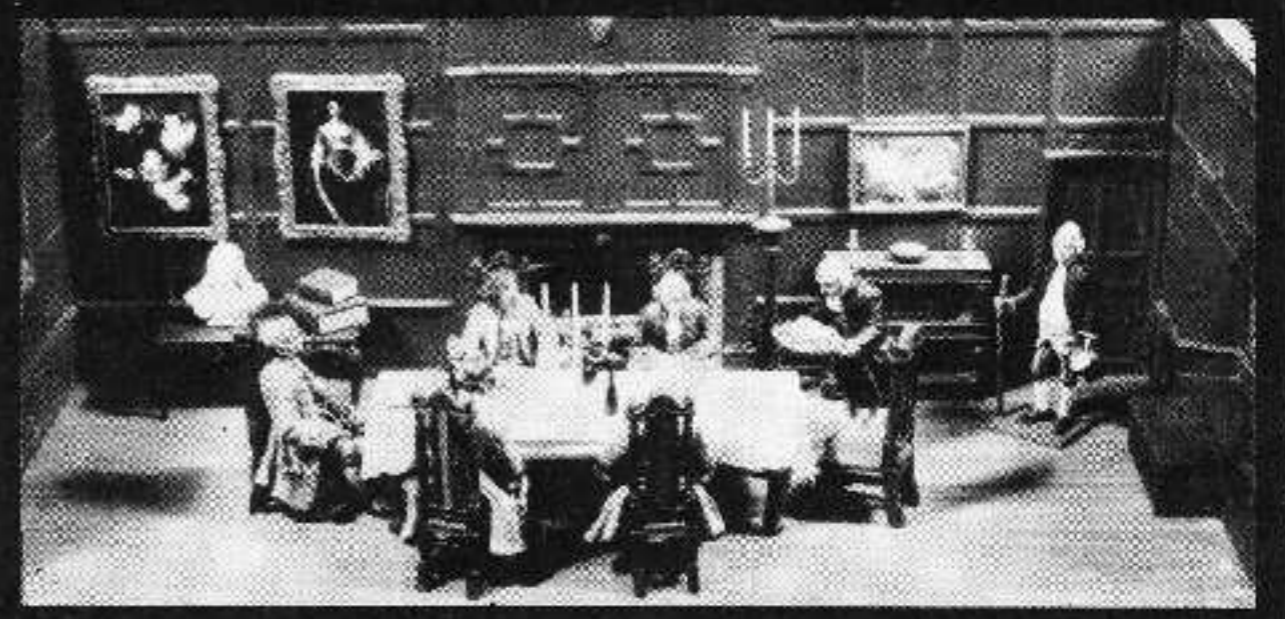
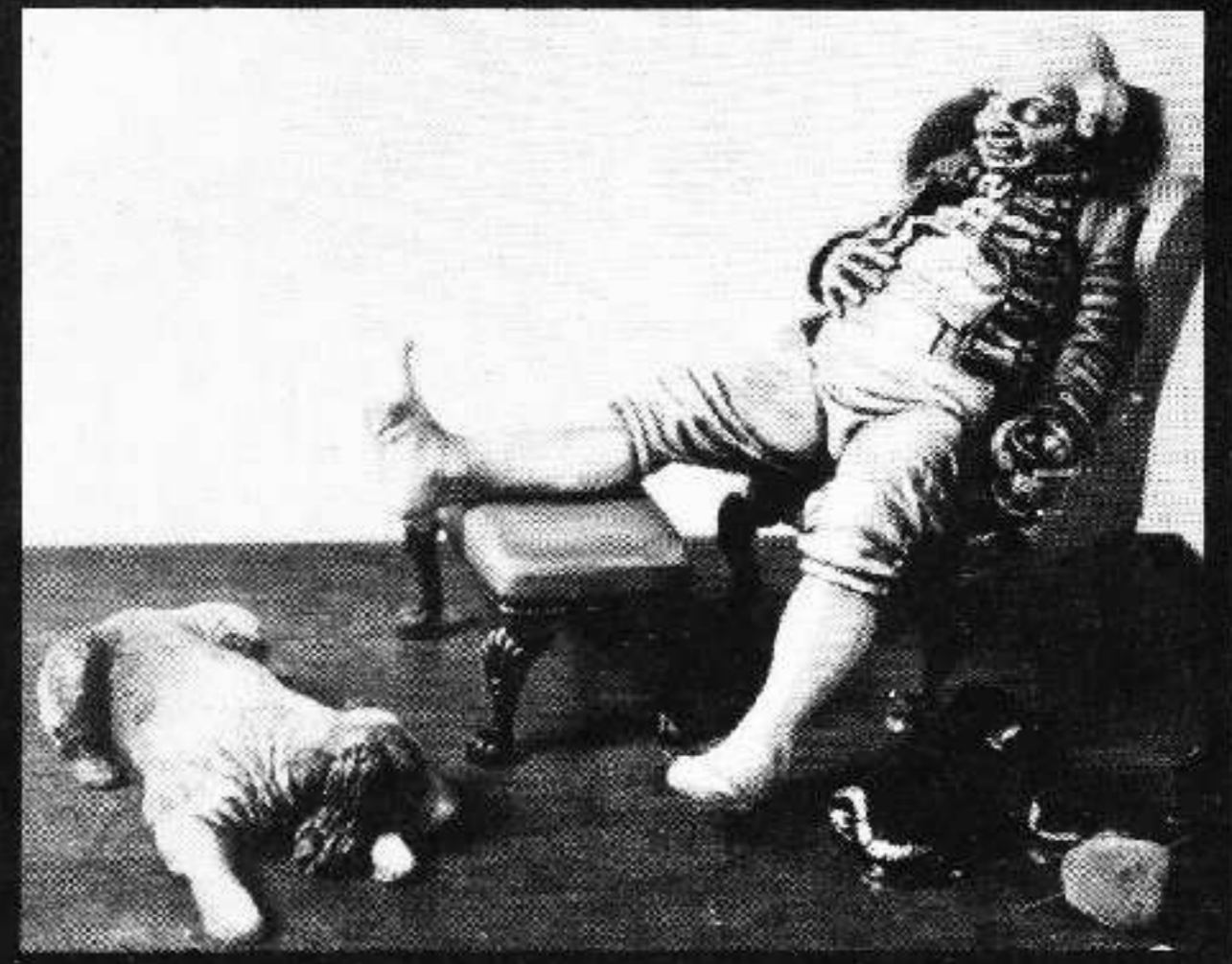
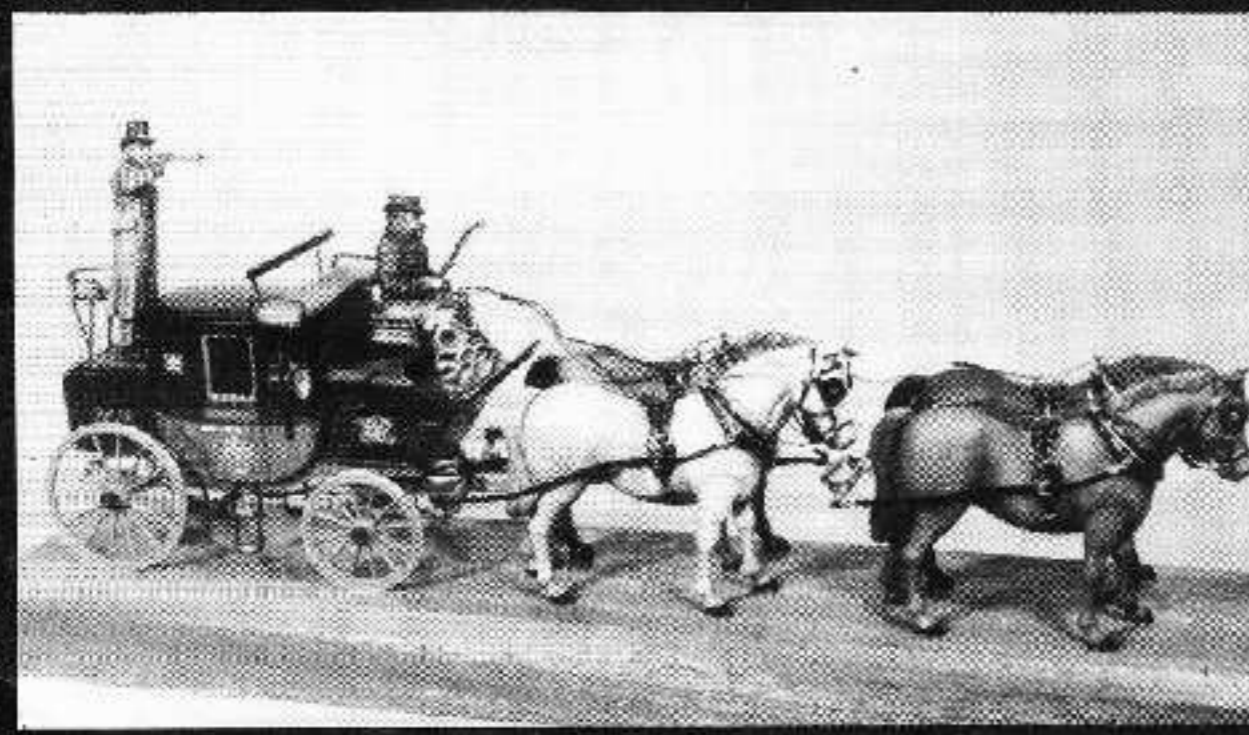
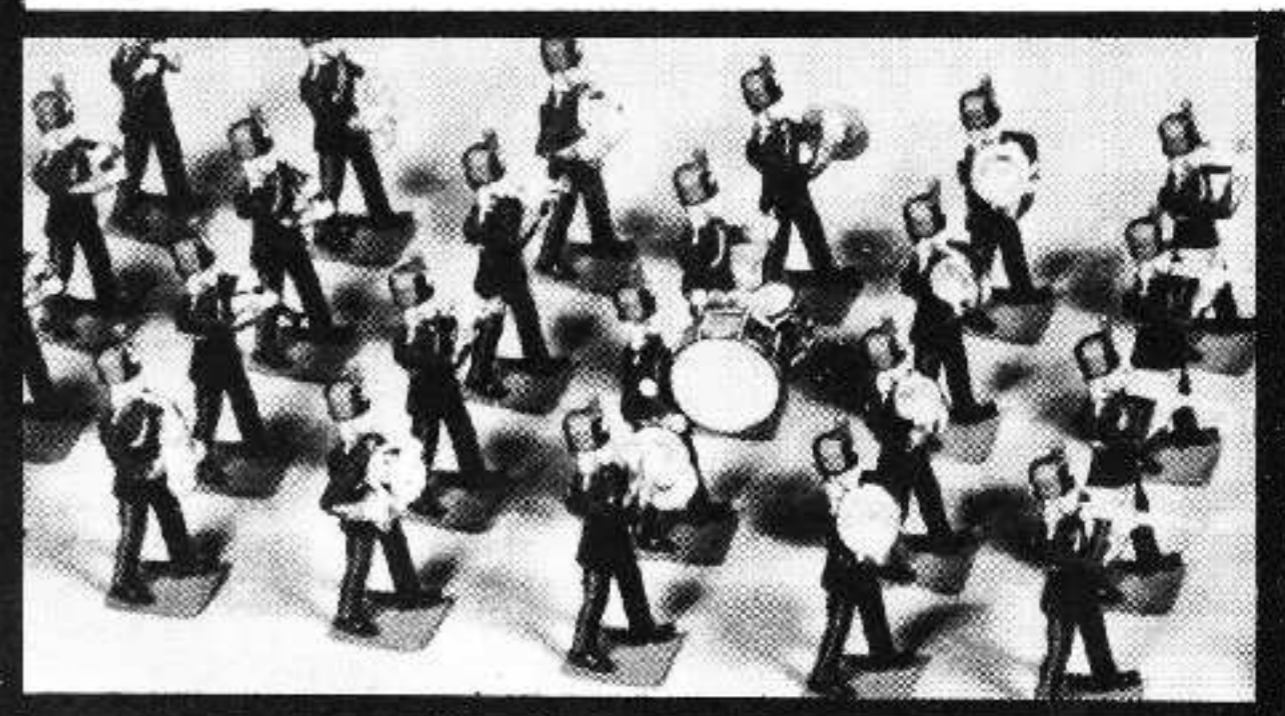
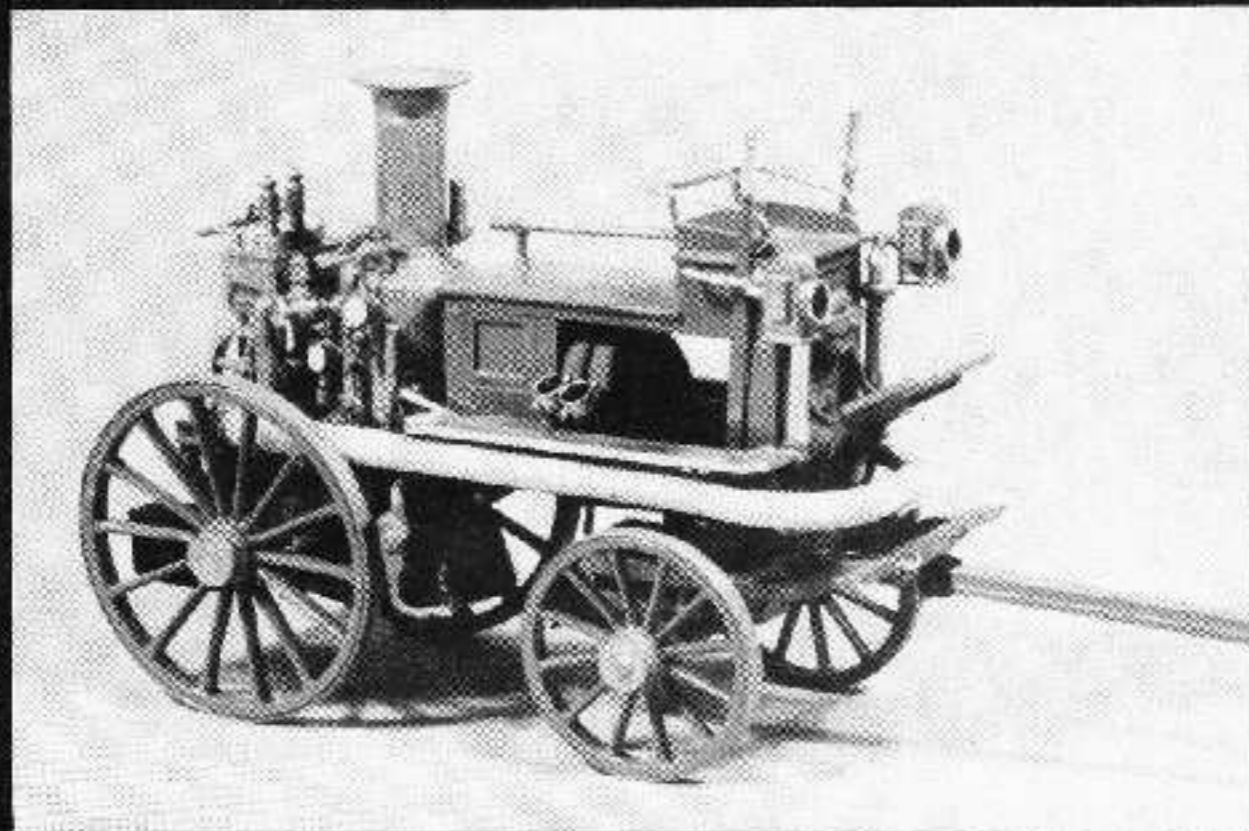




PHOENIX

CATALOGUE AND HANDBOOK
OF
CAST METAL MODEL & FIGURINE KITS



PHOENIX MODEL DEVELOPMENTS LTD.

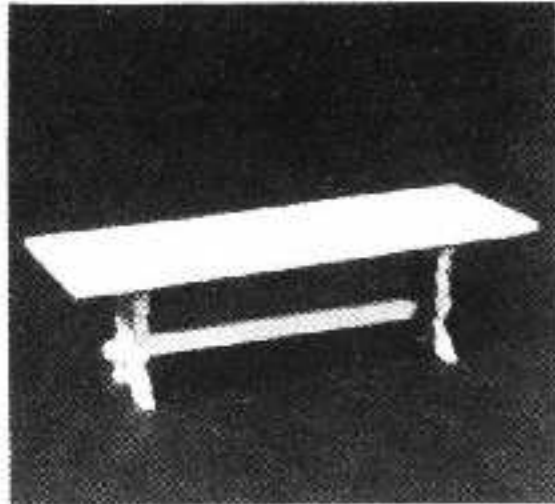
PERIOD FURNITURE



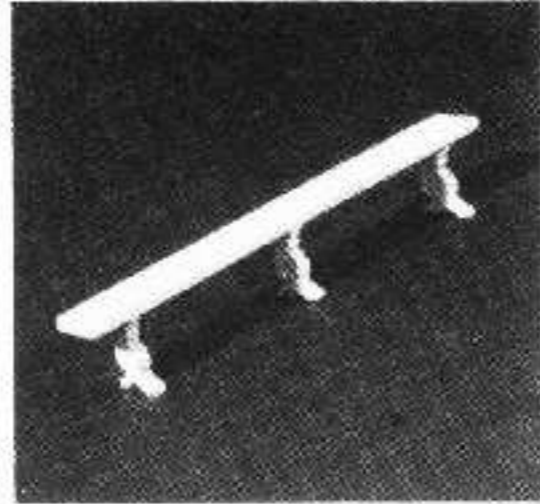
1/32nd Scale. Packed to be assembled as required.

The Furniture and 'Fittings', all scaled to 9.26mm to 1 foot (this assumes a 54mm figure to be 5'10"), are cast in the same metal as our figures and are designed for easy assembly where required. Our aim in producing this range of fittings is to enable the model figure collector to create a setting for his favourite figures in which they can 'come to life' and be seen in the 'atmosphere' of their time.

The present range, which we hope will increase continually, provides suitable 'sets', furniture and various small articles, which the modeller may use to suit his own fancy, for any period between approx. 1500 and about 1850 although a great deal of flexibility in use is possible. Most of the pieces of furniture are modelled from original pieces and it should be remembered that a piece of furniture dated about 1650 could quite well be still in use in 1815 and later.



F1. Tudor type trestle table.



F2. Two trestle forms.



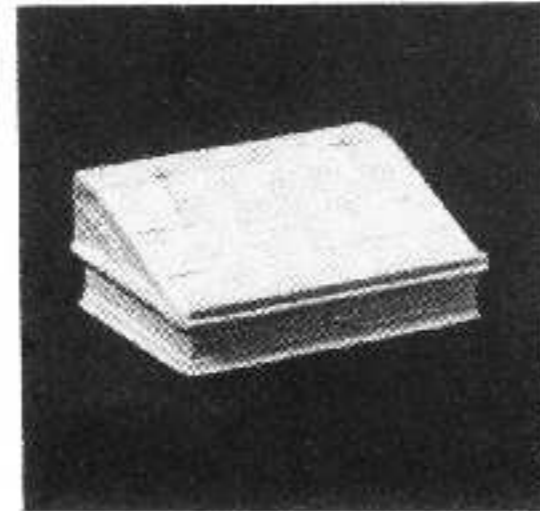
F3. Tudor type chest.



F4. Two 17th cent. Padded chairs.



F5. 17th cent. Side Table.



F6. 17th cent. Desk/Bible box.



F7. 16th cent. Court Cupboard (sideboard)



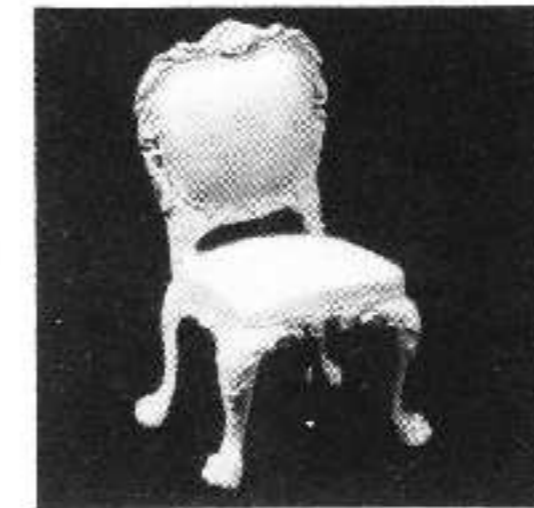
F8. 16th - 17th cent. Settle



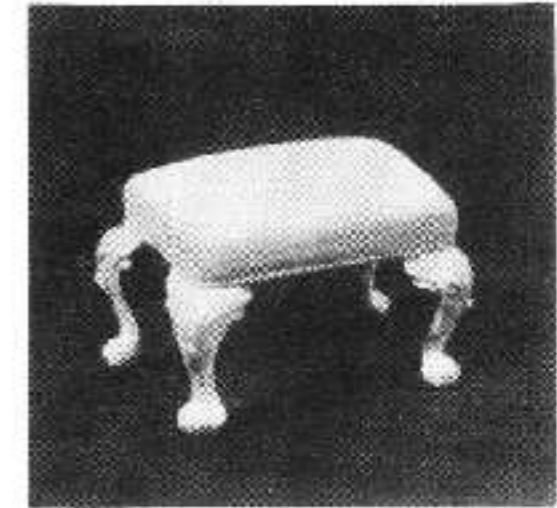
F9. 17th cent. Bookcase



F10. 18th cent. Wing armchair.



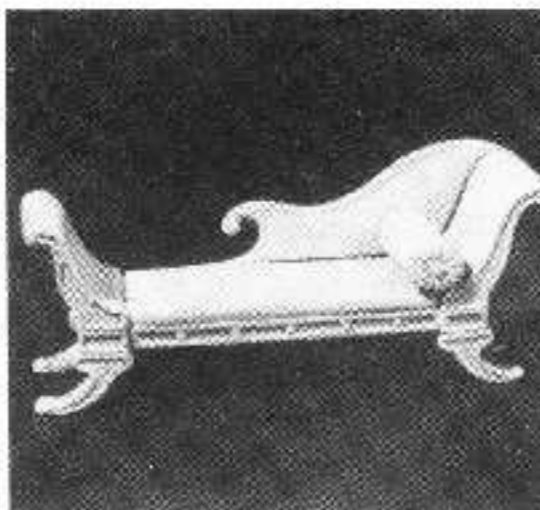
F11. Two 18th cent. Gilt chairs.



F12. Two 18th cent. Gilt stools.



F13. 18th cent. Gilt decorated Side Table.



F14. 'Regency' period sofa.



F15. Two 'Regency' period chairs.



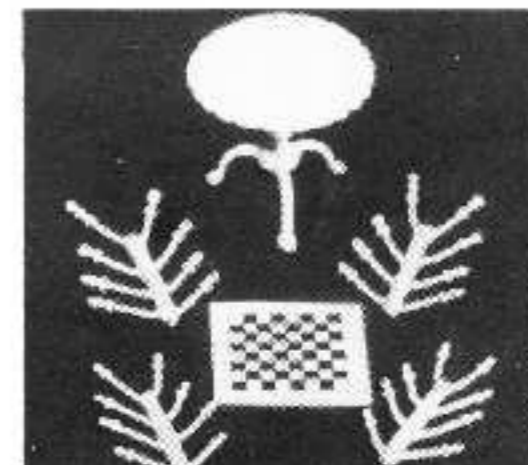
F16. 'Regency' period round table.



F17. Chair (c. 1700)



F18. Large Dining Table (c. 1700)

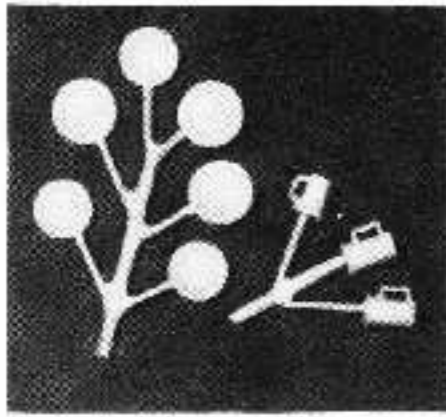


F19. Table & Chess Set (with printed board)

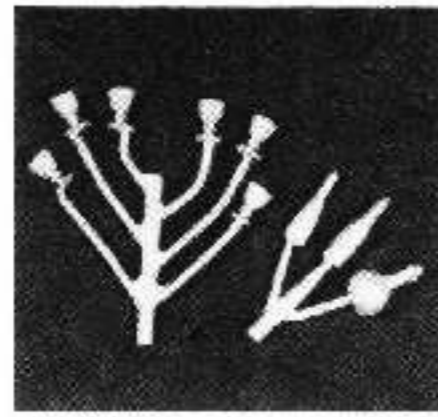
ACCESSORIES



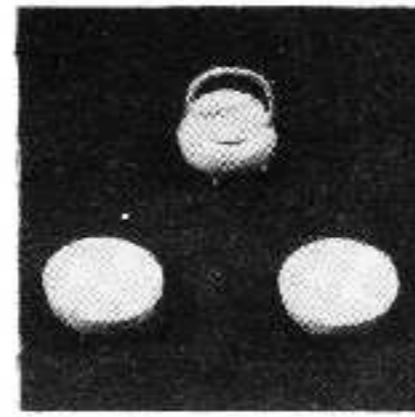
FOR 1/32 SCALE (54mm) FIGURES



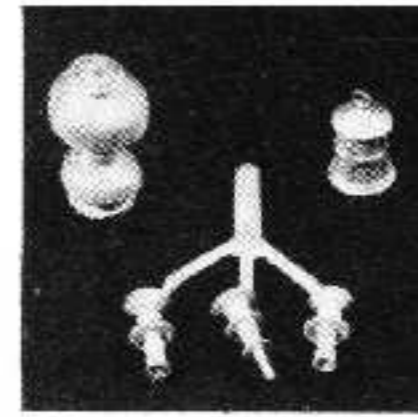
AF1. Six Plates, Three Mugs.



AF2. Six Goblets, Three Bottles.



AF3. Two Bowls, Two Cooking Pots.



AF4. One Lantern, One Oil Lamp, Three Candlesticks.



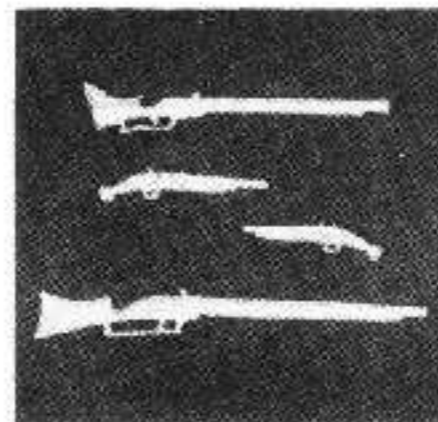
AF5. Two Stone Jars.



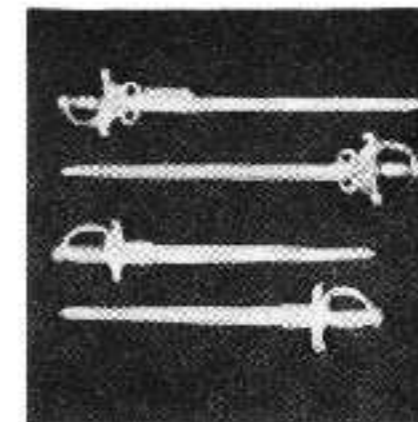
AF6. Two Buckets, One Broom, One Shovel.



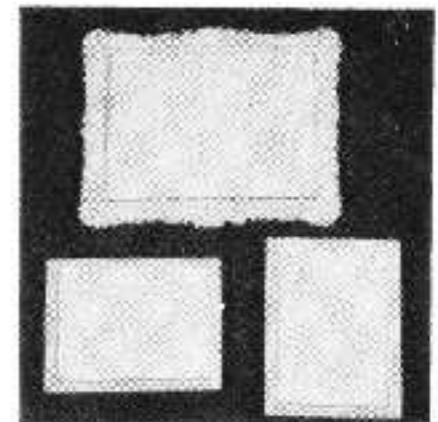
AF7. One Breast-plate, Two 17th cent. Helmets.



AF8. Two Pistols, Two 17th cent. Muskets.



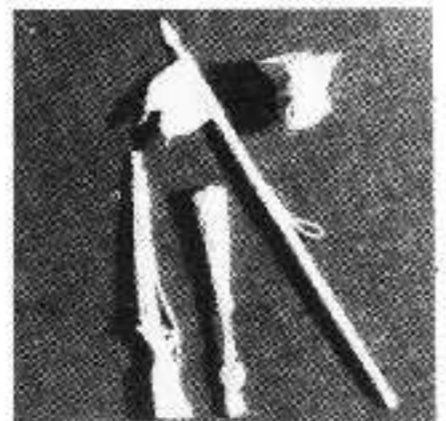
AF9. Four 17th cent. Swords, (Two each of two types)



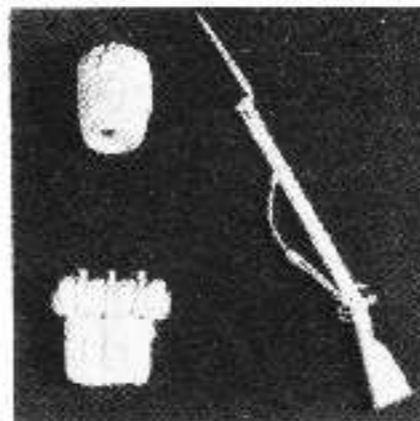
AF10. One large and two small gilt picture frames.



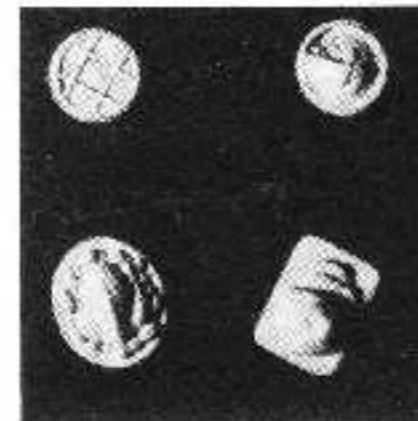
AF11. Two books closed, One book open.



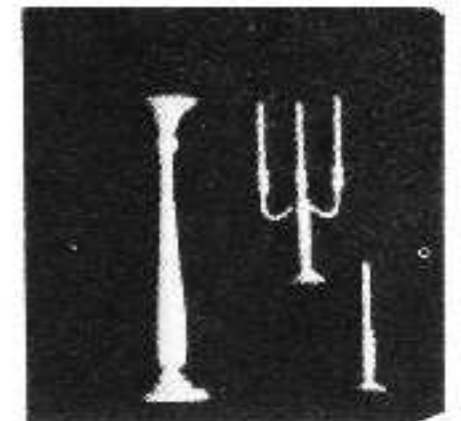
AF12. Parts from Polish Lancer (our N3). Set.



AF13. Parts from French Grenadier (1815) (our N2), Set.



AF14. Four different Foods on Dishes.



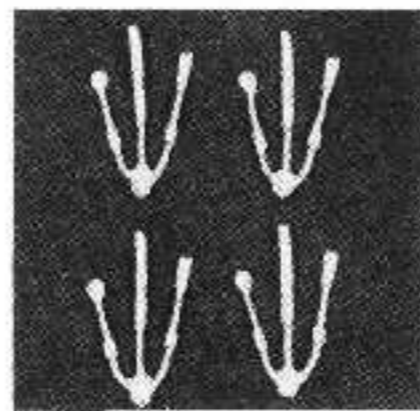
AF15. Candles & Stand. Set.



AF16. Two Dogs. Set.



AF17. Four different Heads (18th-19th cent.). Set.



AF18. Four sets of Cutlery.



AF19. 'Fish Dish' (Atlantis)



AF20. Four Fancy Goblets, (Atlantis)

ASSEMBLY NOTES FOR FURNITURE AND ACCESSORIES

The assembly of most of the items at present in our range is self-evident and a brief study of the drawing of each type will show how most of the parts fit together

In such cases as tables and forms scribed lines will be found on the underside of top surfaces showing where the legs or underframe should be fitted. Table tops etc., should be laid flat, upside down, and the legs glued in position to the marks, ensuring that they are vertical by temporarily holding in position with plasticene. In all cases a quick setting epoxy resin is recommended for adhesive

Before commencing assembly remove any small pieces of 'flash' or feed marks with a sharp knife or fine file and before gluing up with resin ensure that the parts are clean and free from grease.

For painting the furniture any good model paints are suitable and colour schemes are, to a certain extent a matter of personal choice. Generally 16th and 17th Century furniture was oak or elm stained a dark brown or even black but carved work can be relieved somewhat by painting in the shadows and highlights to accentuate the depth and break up plain surfaces. The 18th century furniture was often in walnut or mahogany with gilt decoration and patterned, tapestry coverings. The 'Regency' period furniture can be finished in walnut or mahogany also but pieces such as the chairs were often painted or lacquered and with either gilt or brass-inlay decoration, coverings were typically either plain or striped in pastel shades. Many good books of period furniture are available some containing photographs, with excellent indication of general colours and lay-outs of rooms

54mm FIGURES



1/32nd Scale. Packed to be assembled as required.



H5
Halberdier



H6
Cavalry officer with pistols
(alternative head included)



H8
Cavalry officer preaching
(alternative head included)



H10
Dismounted Dragoon



H11
Ensign with flag



H12
'Ironside' officer mounted

ENGLISH CIVIL WAR



H13
Royalist Cuirassier officer 1642

GENERAL SUBJECTS



B6
16th Century
French Arquebusier



B7
British Colonial Lancer
Circa. 1890 - 1902



B8
'Young Winston' (Churchill)
Omdurman 1898 Mounted



B9
18th - 19th Century
'general purpose' sitting
figure with alternative head
(chair not included)



B12. 'Telling it to the
Marines'.

British naval rating and
Royal Marine Light
Infantryman in
'undress' uniform,
c.1914.

Set of two figures,
(bases are not provided)

SECOND WORLD WAR



B1
'Adolf Hitler', 1940 - 45



B2
W.W.II R.A.F. Pilot



B10
Marshal of the Soviet Union
Georgi Zhukov (1945)



B11
S.S. Officer, evening dress

General Assembly of Figures

1. All castings should be cleaned of any 'flash' or mould-joint marks before assembly, using a fine needle file or knife.
2. For standing figures with bases, (a) fit the base by locating pegs on the feet through holes in base and apply hot soldering iron gently to ends of pegs to achieve a 'rivetted' effect, OR (b) the pegs may be filed down until almost flush with the underside of the base and then secured with quick-setting epoxy cement. Use plasticine 'blob' to hold figure upright until cement has set.
3. Check for correct fit of head, arms or any other separate fittings, into the sockets on main body and lightly roughen areas to be cemented, with a fine file. Do not handle these areas again before fixing as epoxy cement will not bond properly to a greasy surface.
4. Secure the various parts of the figure together, using a thin coating of epoxy cement and prop the parts in place with small pieces of plasticine until cement has set.
5. When assembly is complete and all cement properly cured, the figure should be checked and any excess cement, which may have squeezed out of joints, removed with a fine file and the whole figure should be given a thin coat of good-quality white undercoat paint.
6. The figure is now ready to paint and this can often be made easier by fixing the figure temporarily to a wood block or stick, with 'Evo-Stik' or similar adhesive, and holding the figure by this block until painting is completed.

54mm FIGURES

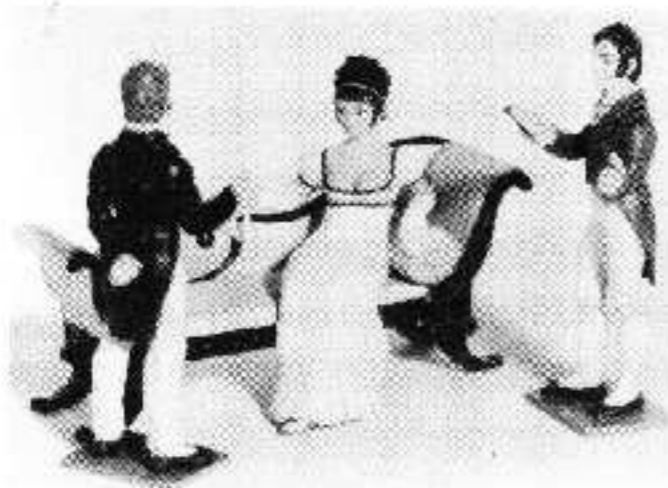


1/32nd Scale. Packed to be assembled as required.

'REGENCY' (NAPOLEONIC ETC.) PERIOD (APPROX. 1800-1830)

The following range of 'civilian' or 'evening dress' figures are intended for use either in their own right or as complementary pieces for dioramas etc., with military figures of the period. Most of the figures are usable in English European and 'colonial' scenes of the time. In order to allow the modeller/collector maximum freedom of expression,

all parts of the figures in each basic position are completely interchangeable mostly without additional alteration, and for this reason the figures are generally split up where possible into separate head, trunk, legs, arms and base. For details of furniture and accessories available to suit these figures, see page 3.



R6 Gentleman standing speaking (trousers)
R1 Lady reclining
R8 Gentleman standing reading book (breeches)



R3 Lady standing (with stole & handbag)
R10 Gentleman seated (playing cards)
R4 Lady seated (playing cards)
R11 Gentleman seated (with glass)
R9 Gentleman standing speaking (outdoor dress)



R5 Lady seated (with glass)
R7 Gentleman standing (with glass) (breeches)
R2 Lady standing (with glass)



R12 Subaltern Coldstream Guards Mess Dress



R13 Subaltern Coldstream Guards Mess Dress



R14 Senior Captain Royal Navy evening dress



R15 Capitaine or Chef de Bataillon French Imperial Guard in Tenue de Société



R16



R17 Hussar and Lady dancing



R18 Cavalry Officer (writing) (chair not included)



R19 Lady playing pianoforte (complete set)



R20 British Brigadier-General (dozing) (complete set)



R21 'Napoleon Advancing'

FRENCH NAPOLEONIC WARRIORS



N1 French Cuirassier 1815



N2 French Imperial Guard Grenadier 1815 (Campaign Dress)



N3 Imperial Guard Lancer (Polish)



THE GEORGIAN PERIOD (1730-1795)

NEW 1/32nd SCALE 18th CENTURY MODELS



This scene is constructed from the background, furniture and accessories in our current ranges.)



G1. General Officer (c.1745)



G2. Gentleman seated (chair NOT included)



G3. Manservant with Tray



G4. Country Gentleman



G5. Speaker leaving a table



G6. Leaning on table. (Chair not included)



G7. Writing at Table. (Chair not included)



G8. Two Men on Tavern settle. Complete Kit.

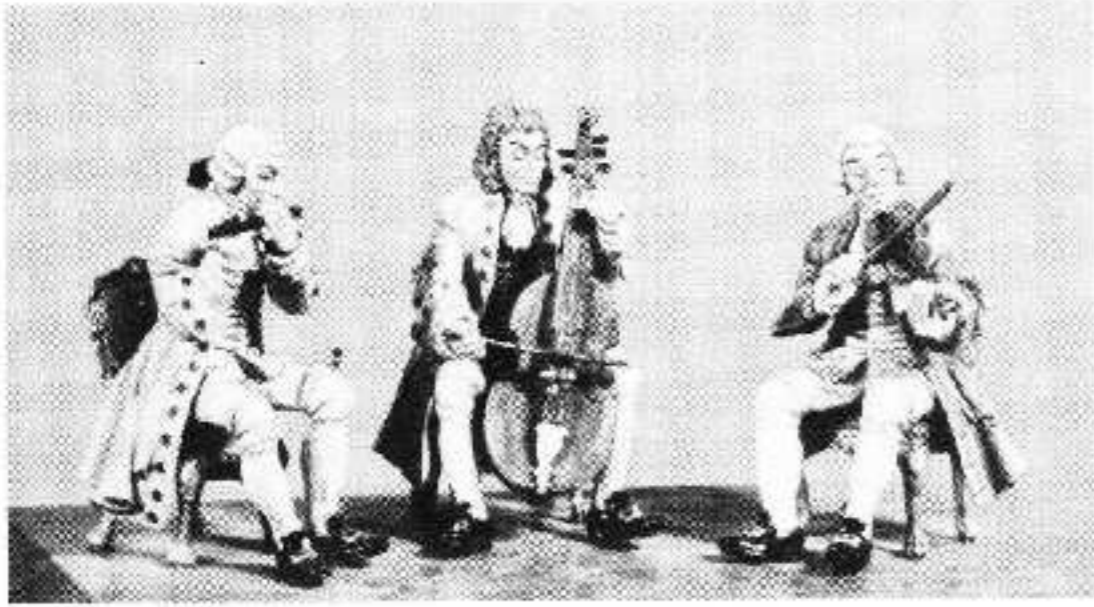


G9. Serving Girl.

THE GEORGIAN PERIOD (1730-1795)



1/32 SCALE (54mm) FIGURES



G10. Flautist (with chair)
G11. Bass-Viol player (with chair)
G12. Violinist (with chair)



G13. Chess Players
Complete set.



G14. American Lady, 1775



G15. American Gentleman,
1775



G16. Seated Lady with Glass



G17. Seated Lady with Fan

(Chair's are not included)

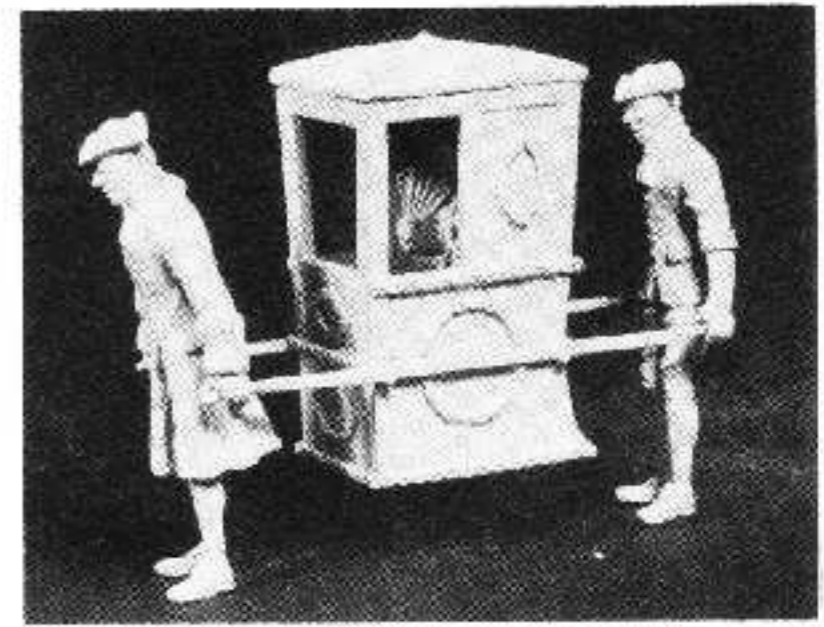
'THE HERO'S RETURN



G18. Officer holding baby



G19. Lady with girl



G20. SEDAN CHAIR with PASSENGER
& CARRIERS. Complete Kit.



G21. FUSILIER & TAVERN WENCH
'Making Merry', 1775.



G22. 'Caught Napping', 1776.



G23. Highwayman

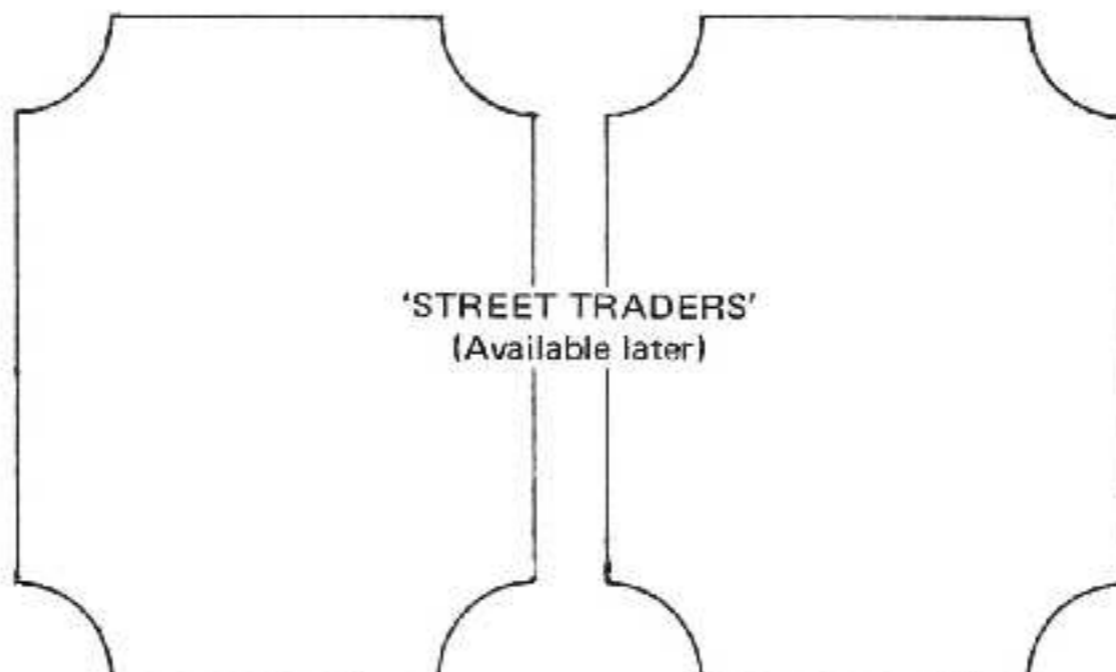
VICTORIANS



1/32nd SCALE FIGURES & KITS



V1 Victorian Gentleman



V2 Victorian Lady



VC1 Hot-Chestnut Barrow (complete kit)

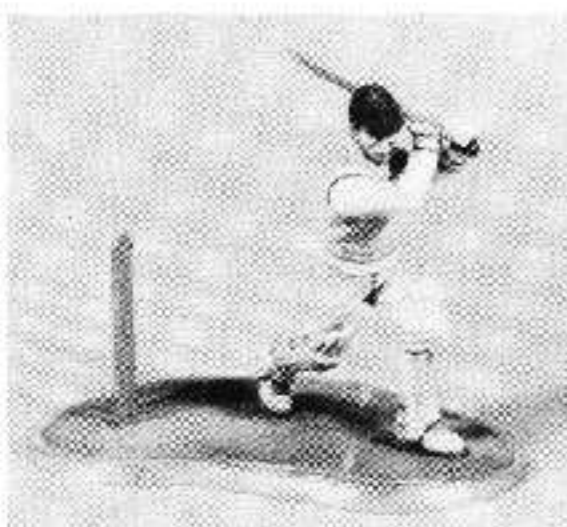


VC2 Costermonger's Barrow (complete kit)

NOTE: These Barrow Kits are to a smaller scale than those listed under 'BYGONE-AGE'.

SPORTSMEN

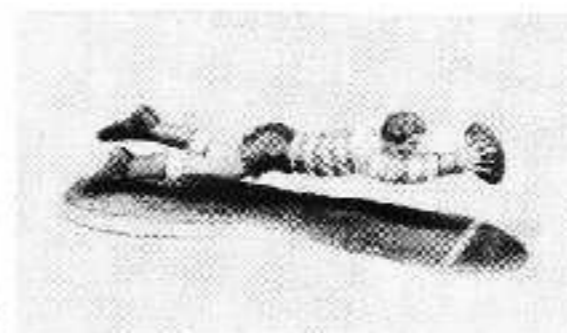
1/32nd Scale White Metal Kits



S1 Batsman (cricket)



S2 Bowler (cricket)



S3 Rugby Player



S4 Footballer



S6 Golfer



S5 Darts Player



S7 Green Bowler

THE ELIZABETHANS

1/32nd SCALE (54mm) FIGURE KITS



E1. GENTLEMAN BOWING



E2. LADY IN DAY DRESS



E3. OFFICER



E4. ELDERLY COURTIER



E5. EXECUTIONER



E6. VICTIM & BLOCK



E7. PREACHER



E8. COURTIER



E9. GENTLEMAN IN CLOAK & BOOTS



E10. FALCONER

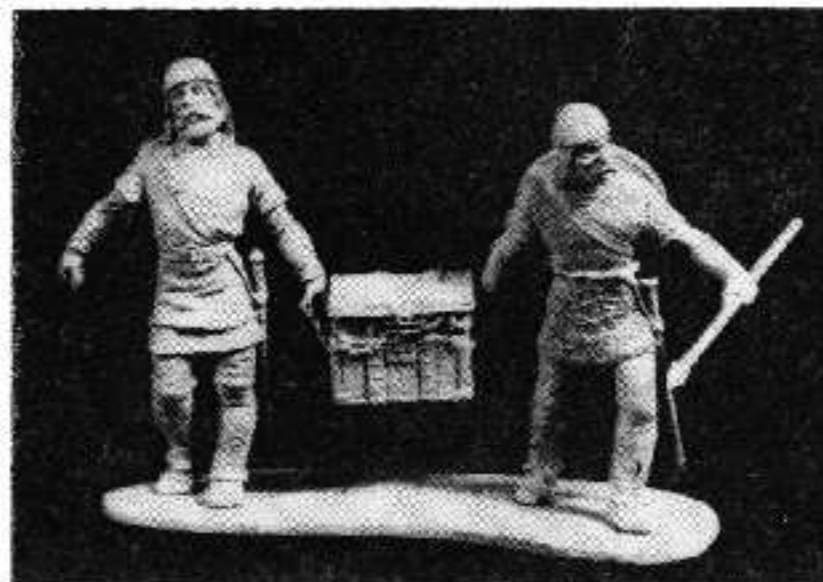


E11. "VIRGINIA GREETING"
1584, Chief Wingina of
Roanoke meets Capt.
Arthur Barlow. Complete Kit.

Lindisfarne 793 a.d.



M1. VIKING & MONK
Complete Kit.



M2. Vikings carrying chest.
Complete Kit.



M3. VIKING CHIEFTAIN WITH
CAPTIVE WOMAN. Complete Kit.

75mm FIGURES 1/24th SCALE (75mm)



(Painting instructions are included with each kit)



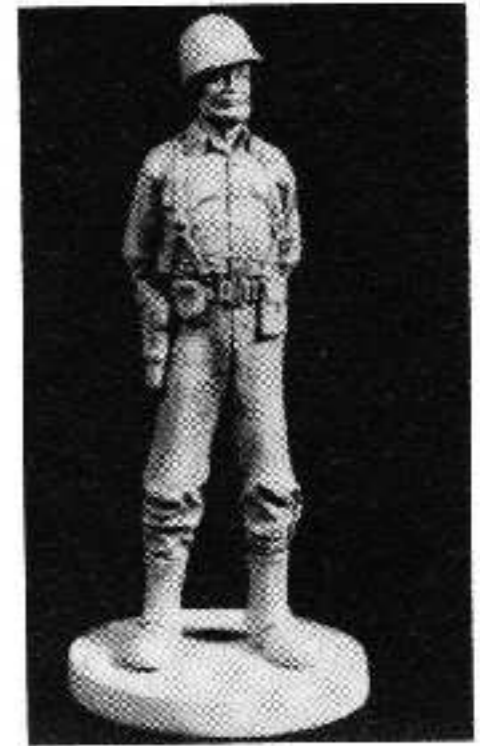
K1. Captain of Continental Marines. 1776



K2. Captain U.S. Marine Corps. 1976

K3.
Lt. Gen. Lewis B. 'Chesty' Puller is a legend in the United States Marine Corps. Respected by his Countrymen, loved by all his men, he served in the Marine Corps for almost forty years, winning more combat decorations (including five Navy Crosses) than any other Marine in history by the time he retired in 1955.

Our 75mm model kit depicts him when a colonel in 1944 during the battle for Cape Gloucester in the Pacific.



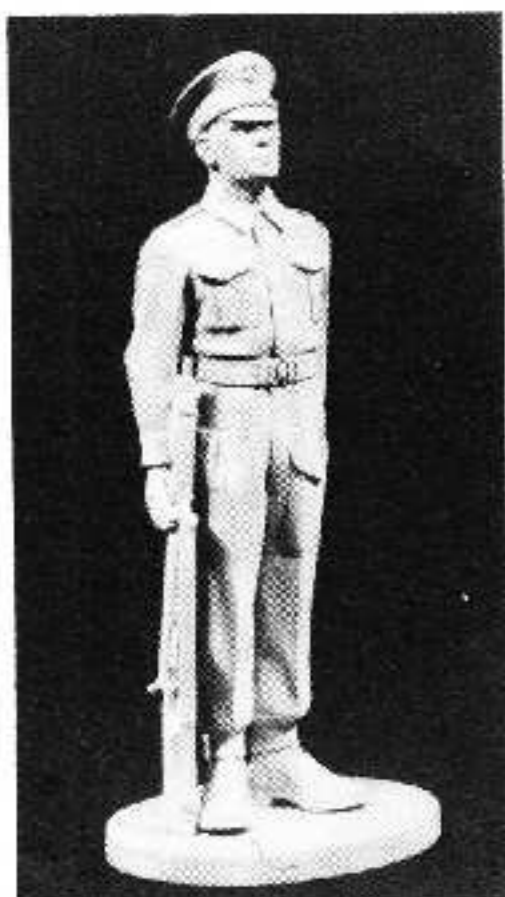
K4. Leib-husaren Regt. No.2 (Von Zieten), Prussia 1760.



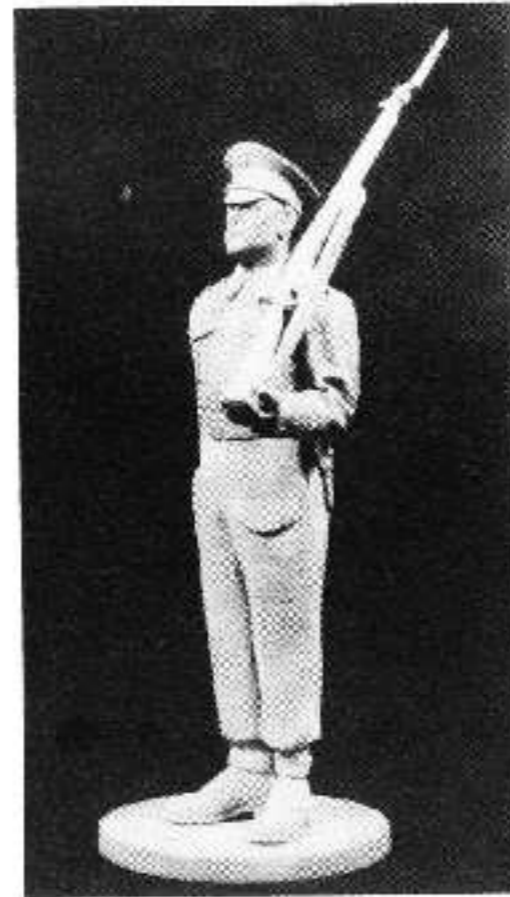
K5. Lance-corporal. Corps of Military Police (with Sten) Europe 1944.



K6. Waffen S.S. Obersturmführer Italy, 1943.



K7. ATTENTION



K8. SLOPE ARMS



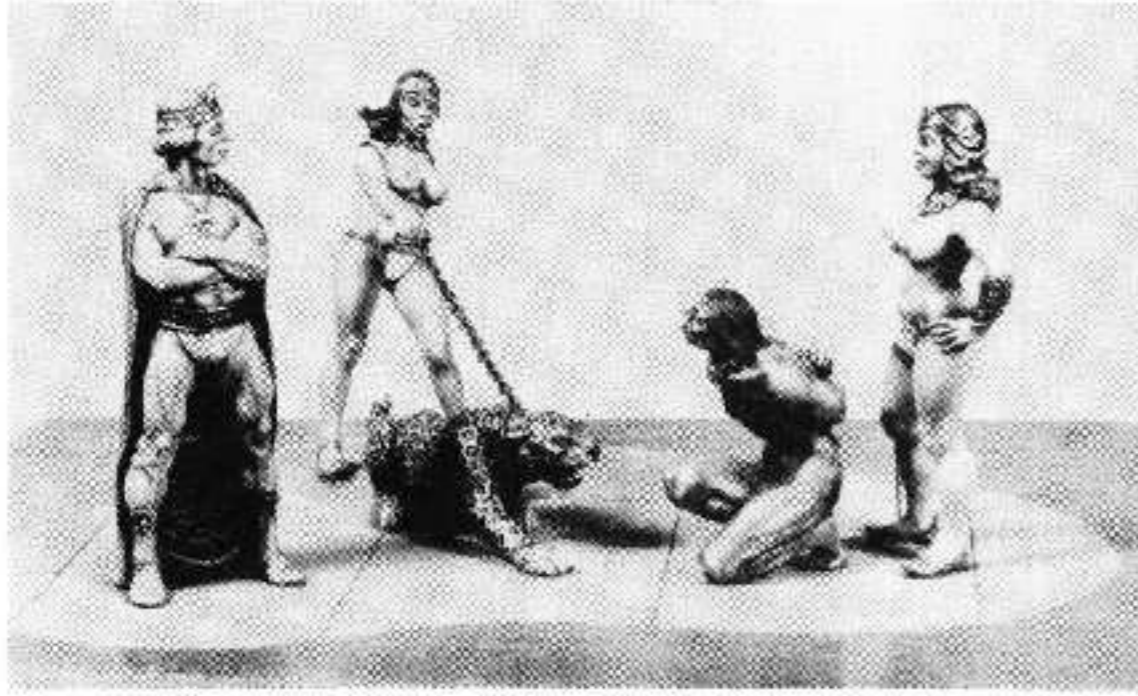
K9. BRITISH INFANTRYMAN EUROPE. 1944.



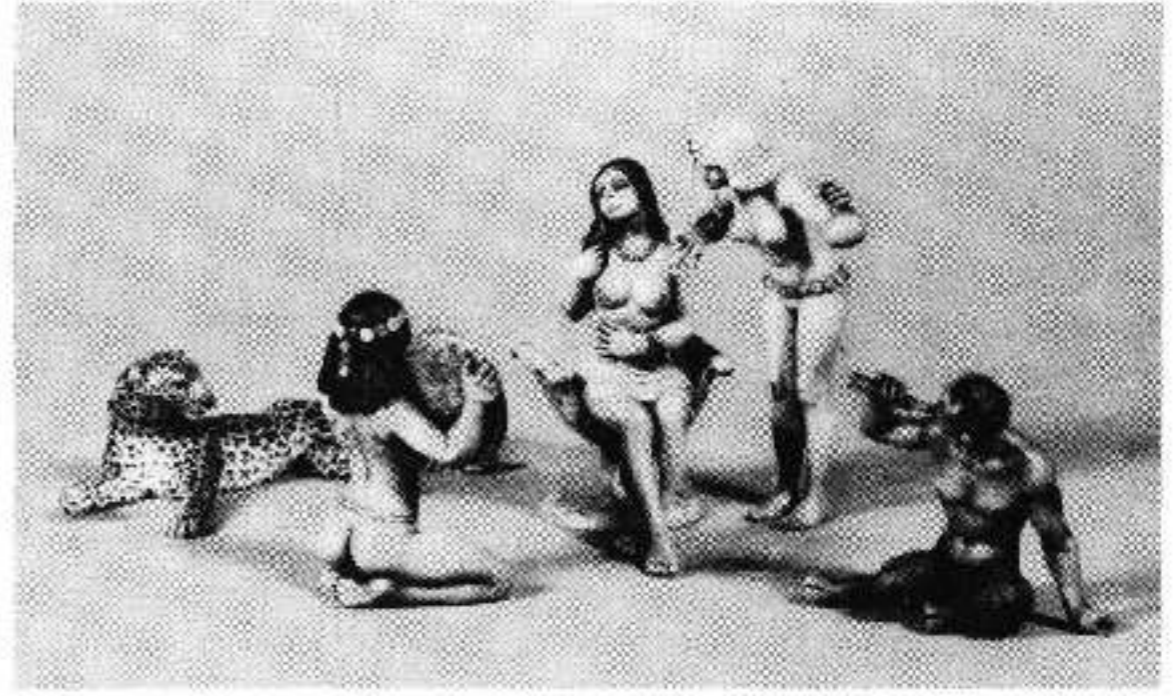
K9a. BRITISH INFANTRYMAN EUROPE, 1944.

THE LOST WORLD OF ATLANTIS

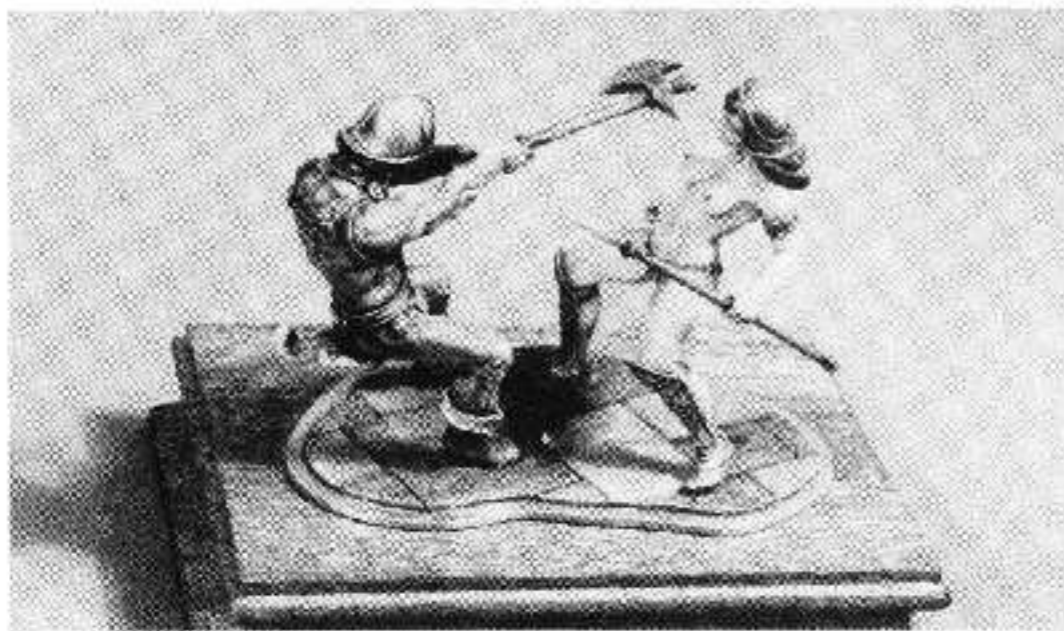
1/32nd SCALE (54mm) Figure Kits



- A1. Khaan (Lord of Atlantis). Kit.
- A2. Princess Myrah (with leopard). Complete Set.
- A3. Female Court Guard. Kit.
- A4. Crouching Captive Thorean. Kit.



- A5. Princess Philendra (including chair). Set.
- A6. Handmaiden with Mirror. Kit.
- A7. Satyr playing Pipe. Kit.
- A8. Handmaiden applying Lotion. Kit.
- A9. Reclining Leopard. Kit.



- A10. Thorean Axeman v. Atlantean Guard. Complete Kit.



- A11. Queen Kharina, with 2 Hounds Complete Set.



- A14. Dancing Girl. Kit.



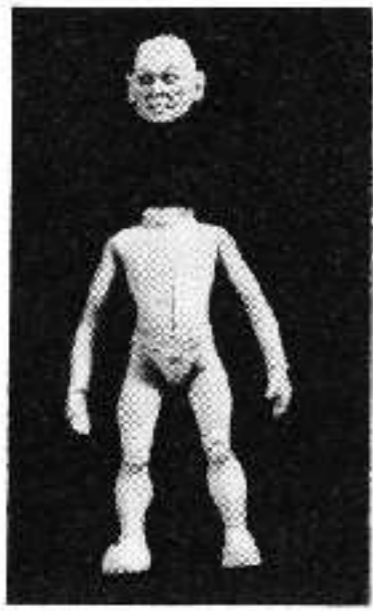
- A12. Girl playing Pipes. Kit.



- A13. Satyr & Maiden with Lyre. Complete Kit.

THE LOST WORLD OF ATLANTIS

1/32nd SCALE (54mm) Figure Kits



A15. Standing Bolg



A16. Seated Bolg.

THE BOLGS

(approx 42mm high)



A17. Standing Atlene



A18. Seated Faerene.



A21. African Emissary



A19. Khaan, seated on throne

A20. Reclining girl.

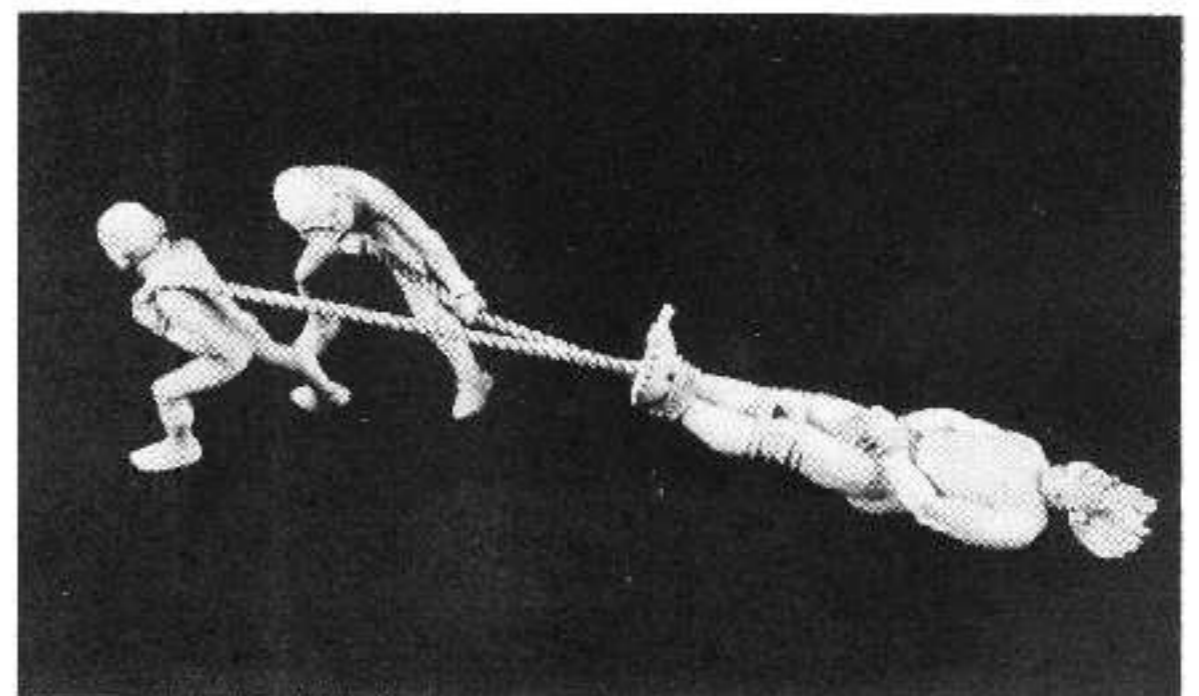
(Note: this figure is designed for the steps and will not lie on a level surface)



A22. Bound girl



A23. 'Encounter in the swamp'
Complete Set.

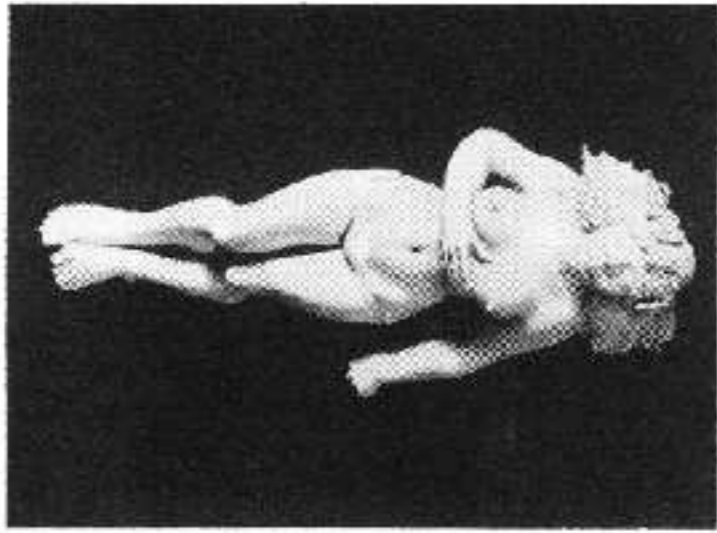


A24. 'Captive of the Bolgs'
Complete Set.

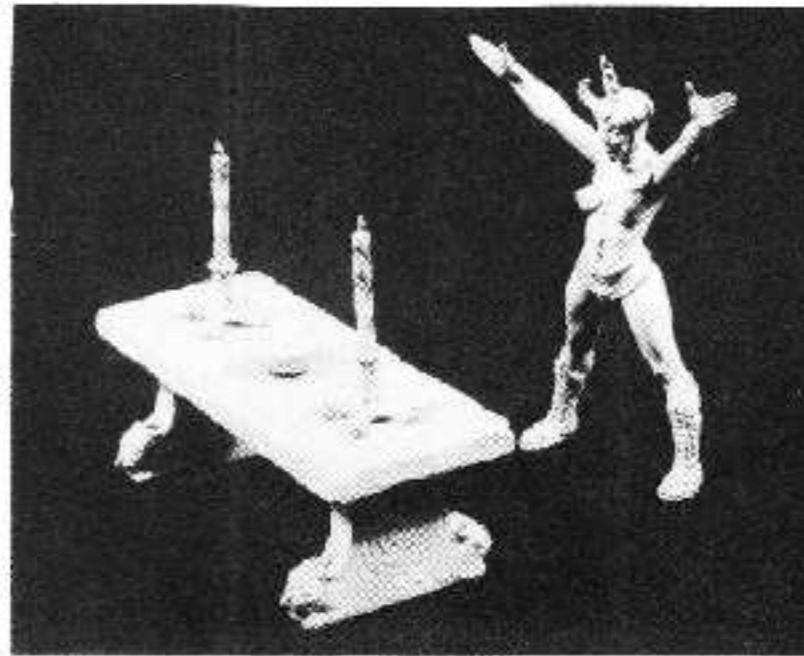
THE LOST WORLD OF ATLANTIS



1/32nd SCALE (54mm) Figure Kits



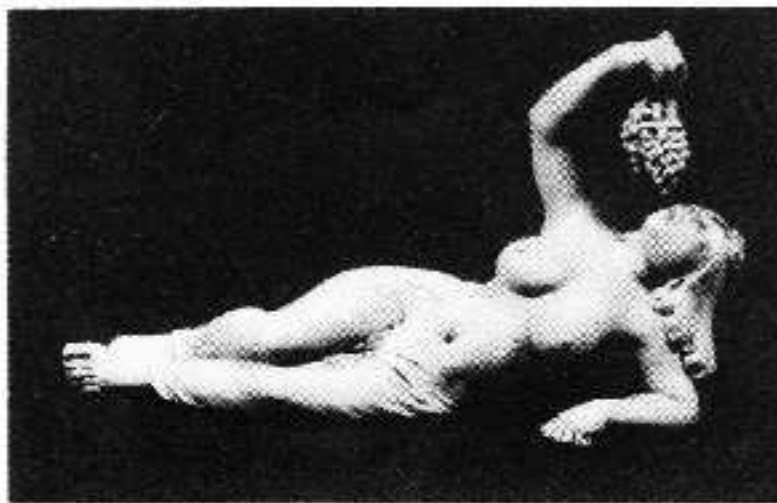
A26. Sun-Worshipper (2)



A25. Sun-Worshipper (1)



A27. Reclining Man, Drinking



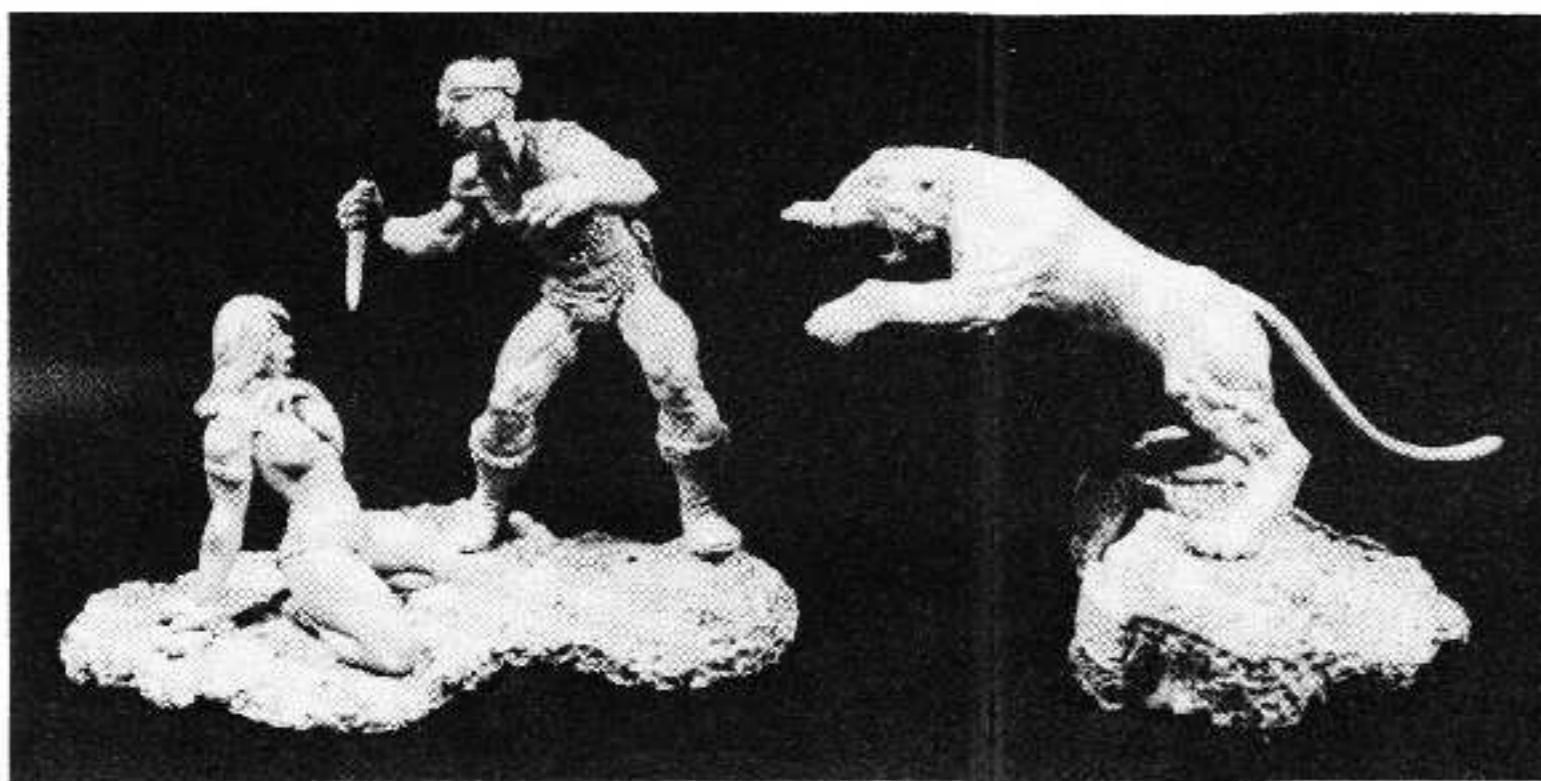
A28. Girl with Grapes



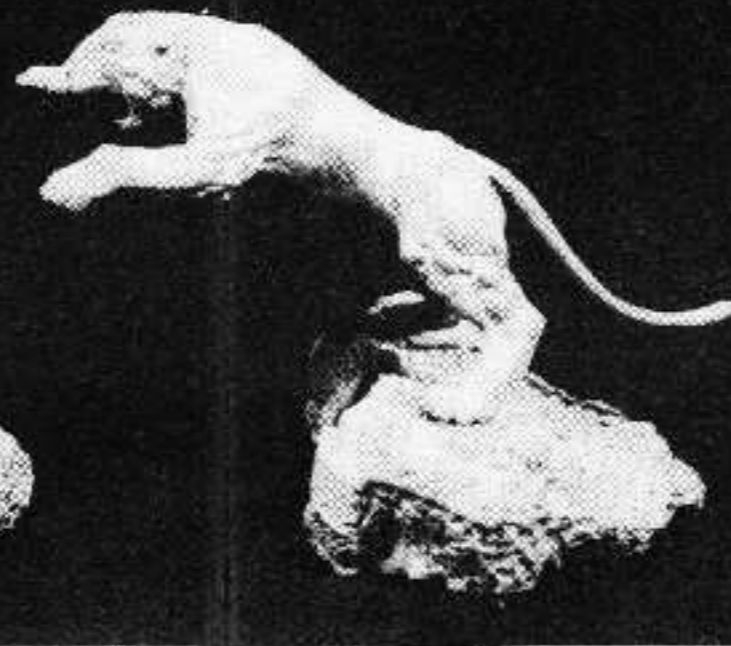
A29. Girl with Cushion



A30. Serving Girl



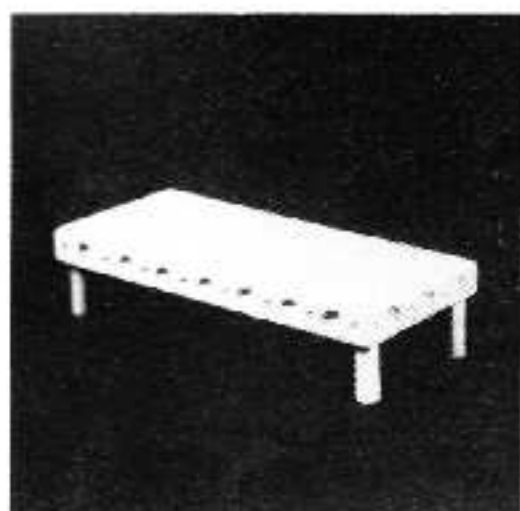
A31 Warrior Defending Maiden



A32 Leaping Tiger



A33 'King' Grossenwulf of Thorea



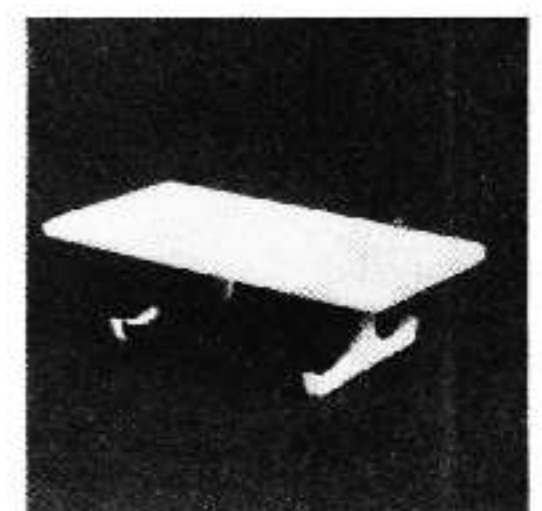
F20. 'Atlantis' Couch



A34 Seated Captive Girl



A35 Old Witch 'Zolda'

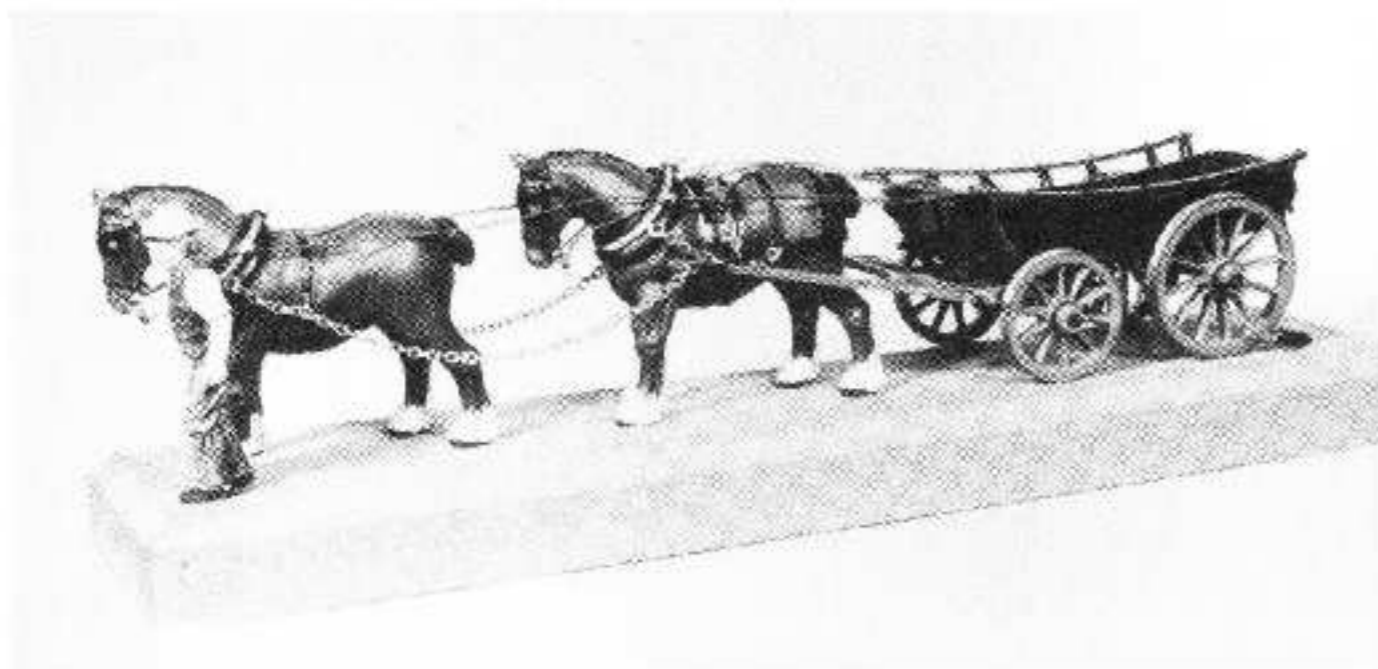


F21. 'Atlantis' Large Table Kit

A TASTE OF VICTORIANA

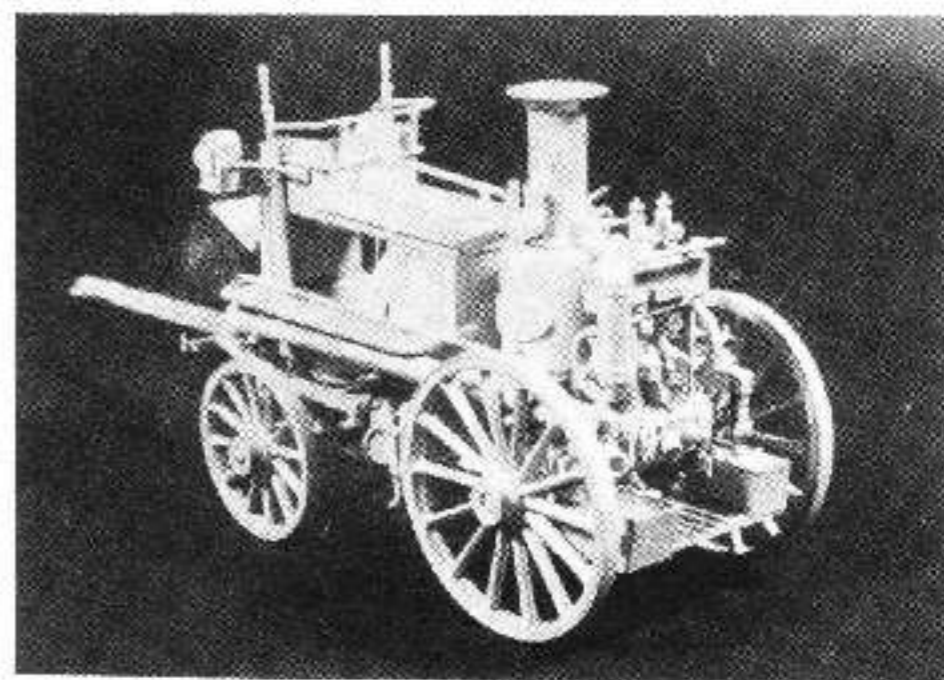
Bygone Age

SCALE MODELS



MONMOUTHSHIRE WAGGON
in fine English Pewter

The waggon can be provided with either one or two horses;
For the shaft horse, order 'Cart Horse'
For the lead horse, order 'Plough Horse'



SHAND MASON STEAM FIRE ENGINE c.1890

Our kit contains 87 cast pewter parts, plus other fittings, together with illustrated assembly and painting instructions. This model is based upon the vehicle on view to the public at the Science Museum, South Kensington, London and we gratefully acknowledge the facilities granted to us by the Curator, in the preparation of the model.



C7. MOUNTED HUNTSMAN with FOXHOUND
Complete Kit (in white metal)



C5. Ploughman pushing plough.



C6. 'Carter' figure leading horse'

1/24th SCALE MODEL KITS (1/2" to 1 foot)

IN FINE ENGLISH PEWTER



BAKER'S CART

ICE CREAM CART



Both of these cart kits contain a full set of coloured transfers which differ slightly from the prototype illustrations

A TASTE OF VICTORIANA

Bygone Age

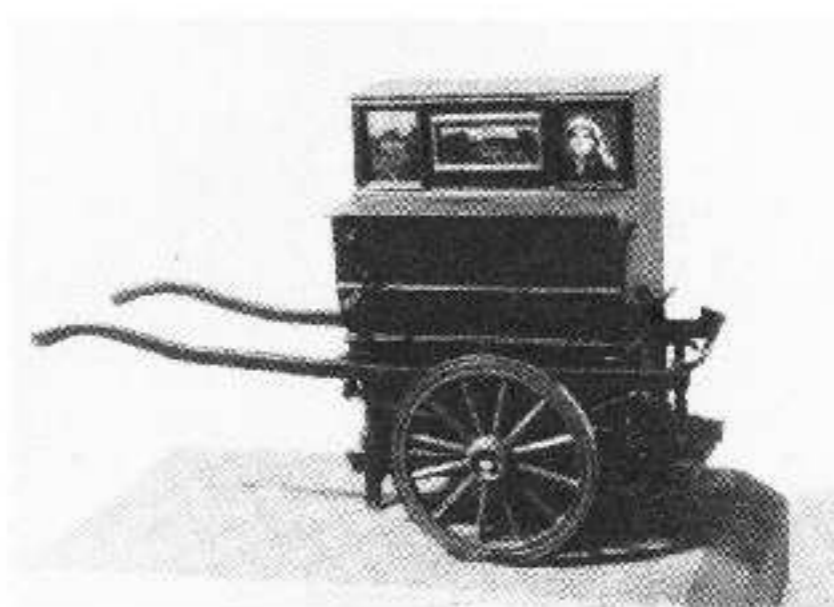
SCALE MODELS

1/24th SCALE MODEL KITS (½" to 1 foot)



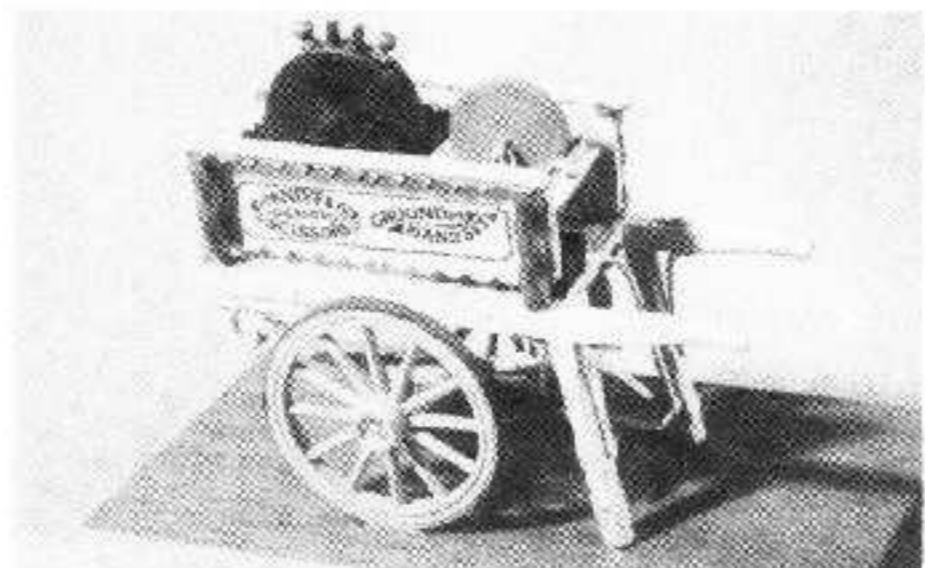
VICTORIAN MILK FLOAT

This model is typical of the vehicles which were a common daily sight in the streets of Victorian London and other large towns and cities and some in fact were still in use until the middle of this century. It will be noted that the roundsman often also sold butter and eggs.



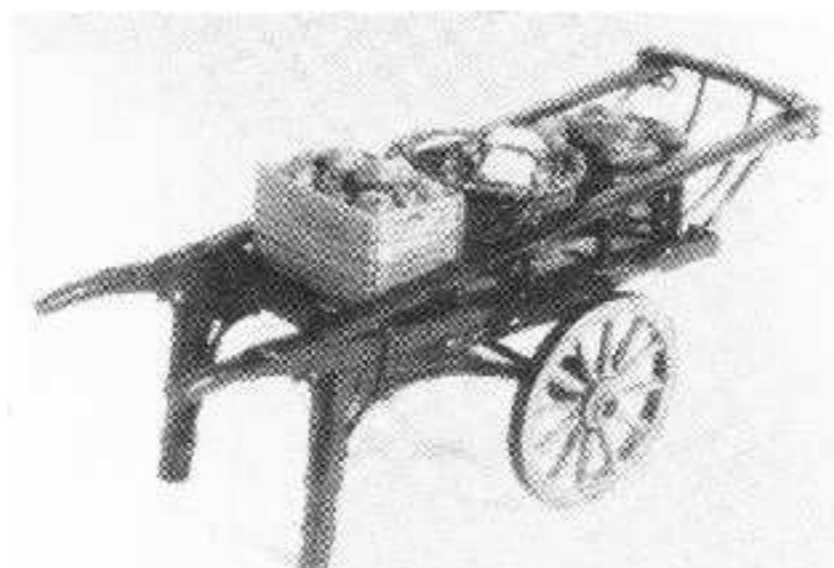
VICTORIAN STREET BARREL ORGAN

The Barrel Organ grinder was doubtless a welcome visitor to Victorian city streets where, to many people he was one of the few sources of musical entertainment available. It was certainly a popular diversion with the children, especially when accompanied by a performing monkey or small troupe of dancers.



VICTORIAN KNIFE-GRINDERS CART

Once a familiar sight in cities, towns and villages throughout the British Isles, the itinerant Knife-Grinder performed a very necessary service in sharpening and cleaning (before the days of stainless steel) cutlery and tools for householders and others who had not the necessary equipment or time.



VICTORIAN COSTERMONGER'S BARROW

The general 'maid of all-work' barrow used for a multitude of purposes by many different street tradesmen and some can still be seen in use in London today. The basic structure has remained unaltered throughout its life with various superstructures added to suit the particular trade use.



VICTORIAN 'HOT CHESTNUT' BARROW

This barrow is still to be seen occasionally in London's streets to this day but in its 19th century heyday it was patronised by all eyes of society and was a very welcome sight on a cold evening to travellers and homegoing revellers.



VICTORIAN CHIMNEY SWEEP'S CART

A tradesman who performed a most necessary function in Victorian Britain's smokey towns and cities, the Sweep's basic requirements for a vehicle were simple and many different types were pressed into use. They naturally tended to be very plain and undecorated because of the dirty nature of the trade.

A TASTE OF VICTORIANA

Bygone Age

SCALE MODELS

SCALE: 1/32nd – 3/8" to 1 foot

19th CENTURY STANHOPE GIG

Originally produced in 1815 to the requirements of the Hon. Fitzroy Stanhope, this carriage, along with its variants such as the Dennett and Tilbury, became one of the most commonly used vehicles on the road, and was particularly favoured by the 'commuter' of the period, commercial travellers and anyone in regular need of fast, light, convenient transport.

Kits available as follows —

- Gig
- Horse, Type 'A' (head raised, incl. harness)
- Horse, Type 'B' (head lowered, incl. harness)
- 'Regency' Period Driver (Ref. C4)



19th CENTURY 'SINGLE' BROUGHAM

This type of carriage was first built in 1839 to the directions of Lord Brougham, and similar designs quickly followed from many coach builders until they became one of the most widely used close-carriage types of the second half of the 19th century.

Note: The Brougham can be assembled for either one or two horses to choice.

Kits available as follows:—

- Brougham
- Horse, 'Type A' (head raised, incl. harness)
- Horse, Type 'B' (head lowered, incl. harness)
- 'Liveried' Driver (Ref. C1)

19th CENTURY 'HANSOM' CAB

This model represents one of the most familiar sights to be seen in the streets of London from the late 1830's until well into the 20th century.

It was the fore-runner of the London 'taxi' and, although known as a 'Hansom' from an original idea by a Mr J. A. Hansom, the actual vehicle we know bears little resemblance to his original design, having been greatly improved upon before general acceptance, by a Mr John Chapman. Many thousands of these cabs were built subsequently with numerous minor variations in design details.

Kits available as follows:

- Hansom Cab
- Horse, Type 'A' (head raised, incl. harness)
- Horse, Type 'B' (head lowered, incl. harness)
- 'Cabbie' figure (Ref. C2)



19th CENTURY 'ROYAL MAIL' COACH (circa 1820)

Synonymous with cheerful prints of 'the good old days' and traditional Christmas card scenes, the Royal Mail Coach is familiar to almost everyone and this model is typical of the vehicles in use for this purpose in their heyday in the first half of the 19th century, before the coming of the railways.

First introduced on the Bristol-London mail run in 1784 by a Mr John Palmer, they quickly became popular with the travelling public by reason of their great efficiency, punctuality and relative comfort — the first two advantages being standards insisted upon by the General Post Office for carrying the mails.

Kits available as follows:—

- Mail Coach
- Horse, Type 'C/A' (head raised, incl. harness)
- Horse, Type 'C/B' (head lowered, incl. harness)
- Driver and Guard figures (set of 2) (Ref. C3)

A TASTE OF VICTORIANA

Bygone Age

SCALE MODELS

SCALE: 1/32nd – 3/8" to 1 foot

19th CENTURY 'STANHOPE' PHAETON

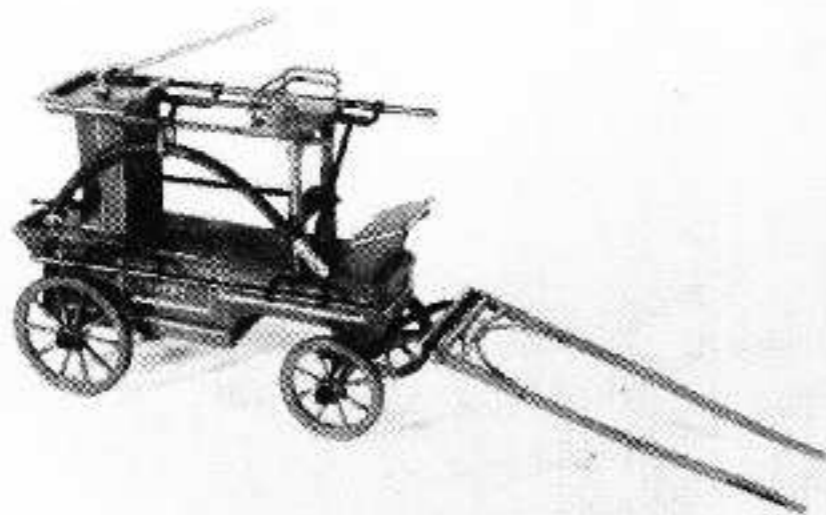
This model represents a relatively 'sober' version of a type of vehicle which was often used by 'young bloods' as the high-powered 'sports-car' of the 19th century. Although relatively light in construction, they were usually driven to a pair of fast horses of good breeding and were consequently capable of high-speed travel. The advantage to the gentleman-traveller was the provision of a rear-seat for a groom (or two) who were responsible for the carriage and horses when the master was not actually driving.



Kits available as follows:

- Phaeton
- Horse Type 'C/A' (head raised, incl. harness)
- Horse Type 'C/B' (head lowered, incl. harness)

NOTE: The Phaeton was almost invariably driven to two horses



19th CENTURY HAND-PUMP FIRE ENGINE

This model represents a typical 'lightweight', mobile fire-pump in common use throughout the 19th century. In country areas the appliance was usually horse-drawn while in towns and cities, with shorter distances to travel, they were often pulled by hand and were then not fitted to carry a driver.

Kits available as follows:

- Fire Engine
- Horse 'Type A' (head raised, incl. harness)
- Horse 'Type B' (head lowered, incl. harness)

19th CENTURY DELIVERY VAN

This vehicle was almost as common as the Costermonger's barrows on the streets of Victorian and Edwardian London. It was drawn by one horse and used for local deliveries by many different trades, including Butchers, Bakers, General Stores and the railway companies.



Kits available as follows:

- Delivery Van
- Horse 'Type A' (head raised, incl. harness)
- Horse 'Type B' (head lowered, incl. harness)

1/32nd SCALE FIGURES FOR CARRIAGES



C1
Driver for
Brougham or Phaeton



C2
Hansom 'Cabbie'



C3
Driver & G.P.O. Guard
for Royal Mail Coach
(sold as set only)



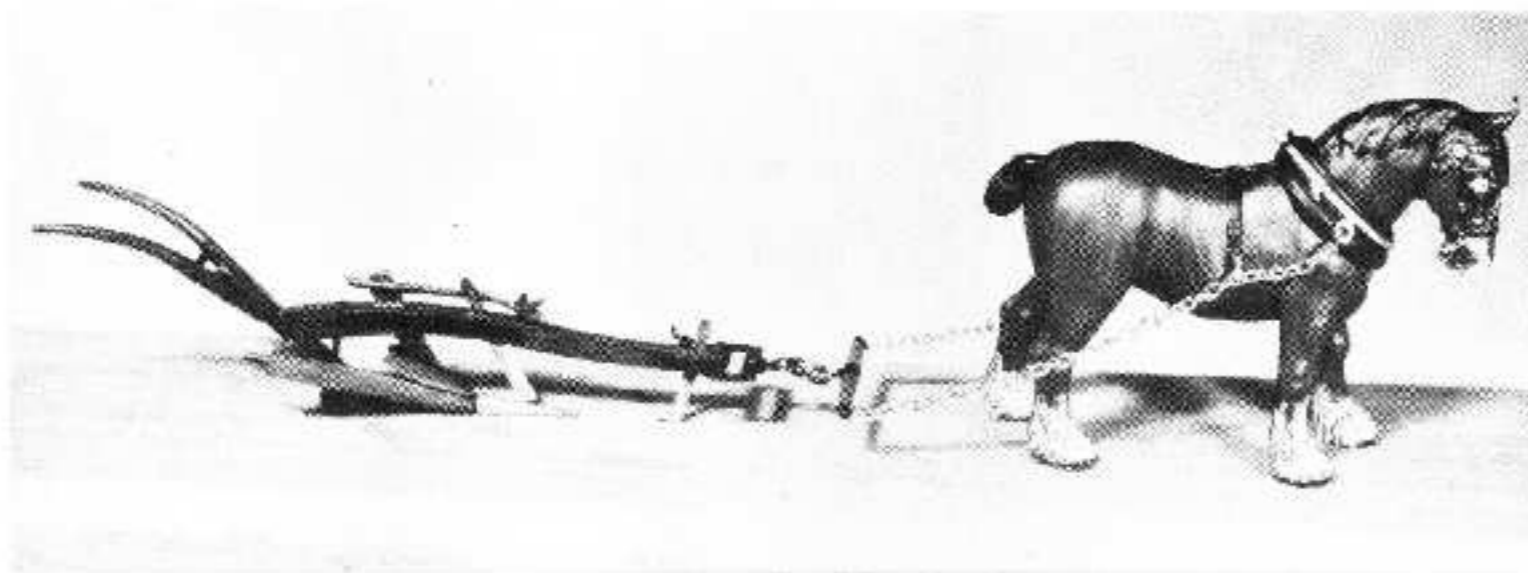
C4
Driver for Gig

A TASTE OF VICTORIANA

Bygone Age

SCALE MODELS

SCALE: 1/32nd – 3/8" to 1 foot



19th CENTURY SUSSEX TURNWREST PLOUGH

This model represents a typical Sussex turnwrest wooden plough which was in common use up to the 19th century. The name derives from the fact that the mouldboard (or wrest) could be quickly detached and fitted to either side of the plough so that, when a furrow had been completed, the plough could be turned round and run back in the opposite direction while still turning the earth over to the same side as before. This facility was particularly useful when ploughing in hilly country such as the Sussex Downland.

Kits available as follows:

Plough

Plough Horse (including harness & fittings).

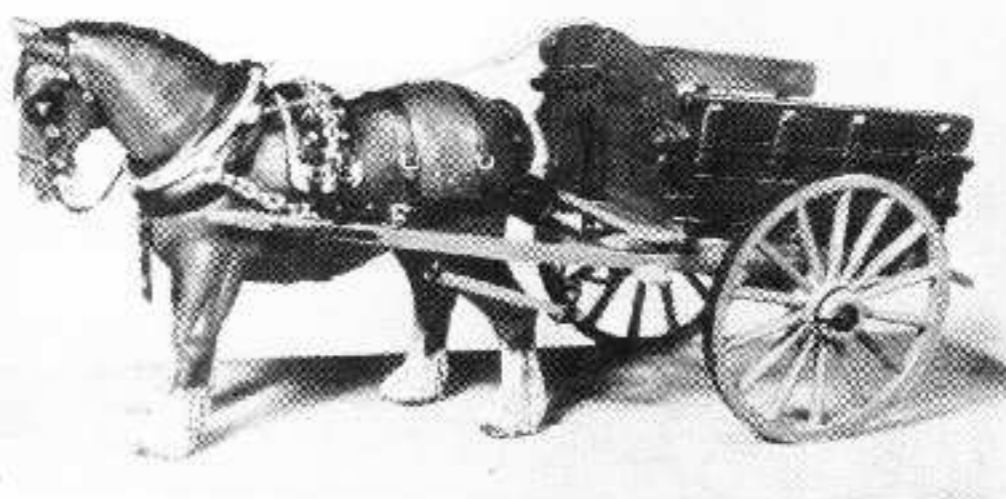
19th CENTURY 'SCOTCH' OR TIP CART

This model represents a typical cart such as was used for general duties on the farm during the 19th and early 20th century. It tips to discharge its load of rootcrops, manure, etc., and the angle of tip could be adjusted by bolts in the tip-stick. Carts such as this were imported from Scotland in large numbers during the 19th century and thus the type became known as 'Scotch Carts', although many were also made in English workshops, to the same design.

Kits available as follows:

Tip Cart

Cart Horse (including harness & fittings).



All of the 'Bygone-Age' kits, which are non-working display models, are produced in kit form in best quality English Pewter which is entirely lead free. All Kits include complete, illustrated assembly instructions and painting details. More items are in course of preparation.

SUGGESTED TOOLS TO COMPLETE THESE KITS

Quick-setting epoxy cement, small half-round 'needle' file, modelling knife, small quantity of Plasticene, Model paints (oil or cellulose).

Available from Ironmongers or good Model Shops.

We are always interested to hear from our customers and to listen to their suggestions for future models.

We cannot guarantee to produce them all in one lifetime but we do our best where possible.

Please bear in mind that the standard of quality and originality we set out to produce cannot be achieved overnight. We are continually producing new items. Details of any new additions will be available from your local stockists or advertised in the Model Press, as soon as possible.

We reserve the right to suspend or amend any items described in this catalogue if found necessary, without prior notice.

Home & Overseas Retail Trade enquiries welcome.

Phoenix Model Developments Ltd.

Producers of Miniature Historical Figures & Scale Models etc.

The Square, Earls Barton, Northampton, NN6 0NA, England. Telephone Northampton 810 612

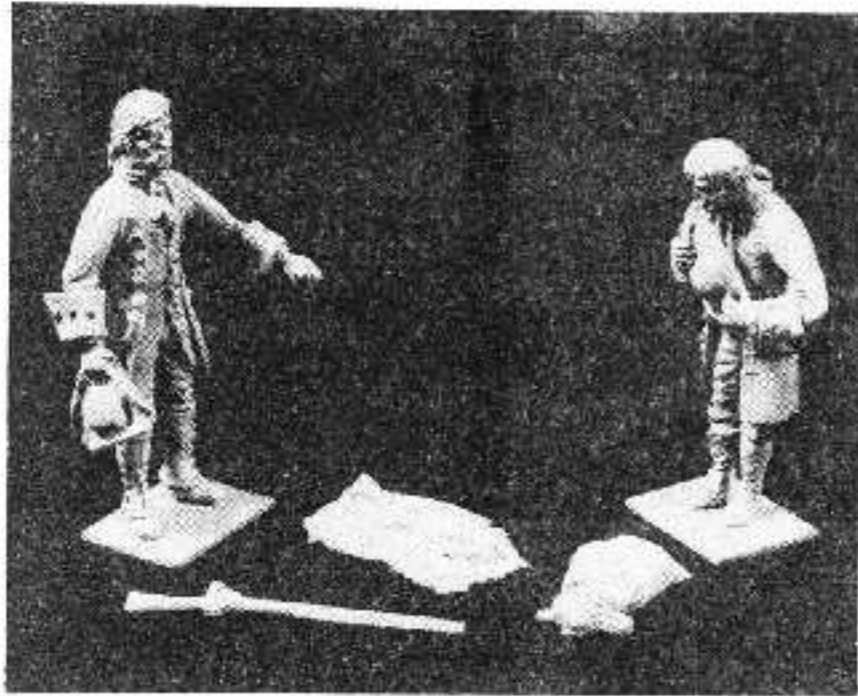
Phoenix Model Developments Ltd.

Producers of Miniature Historic Figures & Scale Models etc.



ADDITIONAL 1/32nd. SCALE KITS

18TH CENTURY FIGURES



G24. Gamekeeper & Poacher with "catch". Complete set



G25. Innkeeper



G26. Workman Drinking



G27. Workman with Spade

GENERAL SUBJECTS



B13. Algonkian Indian Chief - 1584 (from set E11.)



B14. Sauk-Fox Indian, Iowa 1840.

THE VIKINGS (Lindisfarne 793 A.D.)



M4. Viking Abducting Maiden



M5. Viking Chief Blowing Horn



C8. Racehorse & Jockey Complete set.



SP1. The Prince & Princess of Wales, 1981

Phoenix Model Developments Ltd.

Producers of Miniature Historic Figures & Scale Models etc.



The lost world of Atlantis?



1/32nd Scale



A36 'Ogash'



A38. THE WINGED HORSE
Complete kit



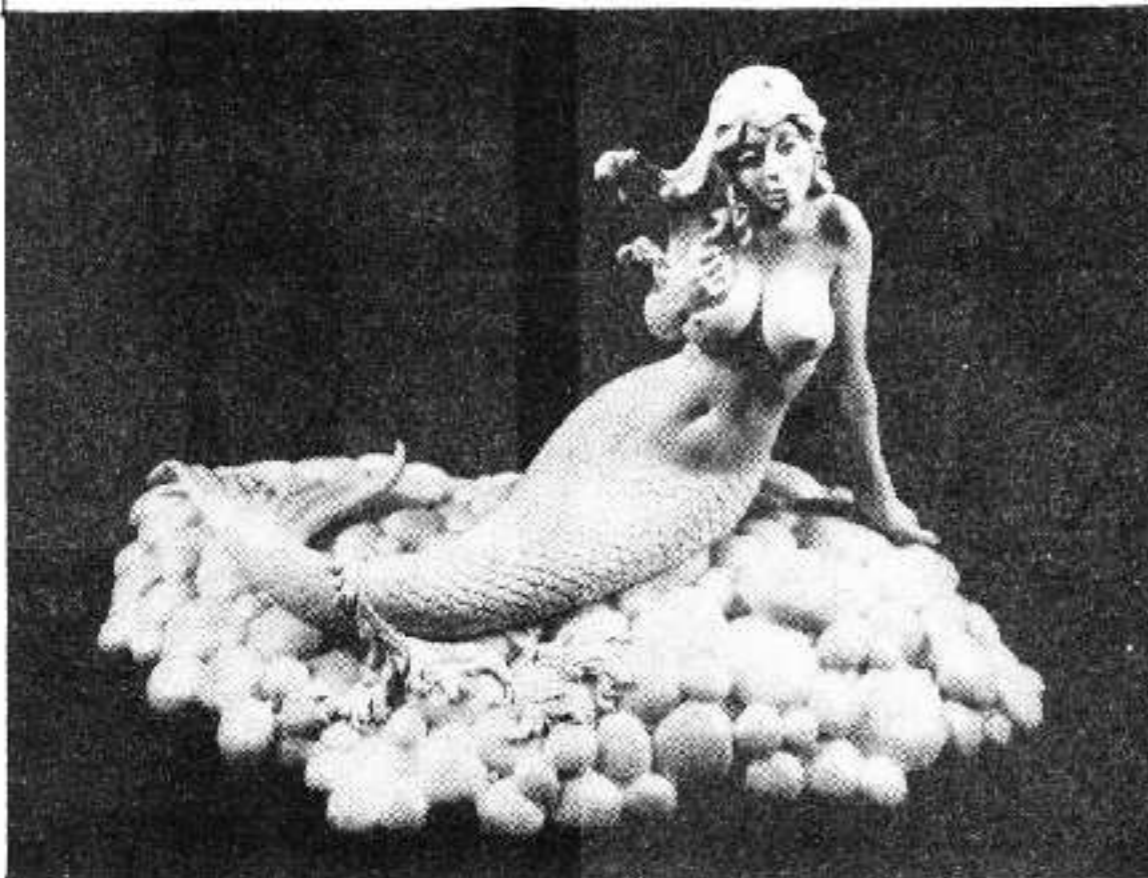
A37 Female Thorean
Guard

Esclusivista in PADOVA
BITTA TESTI

VIA ALTINATE,
VIA S. LUCIA,

Atlantis THE LOST WORLD ? ...

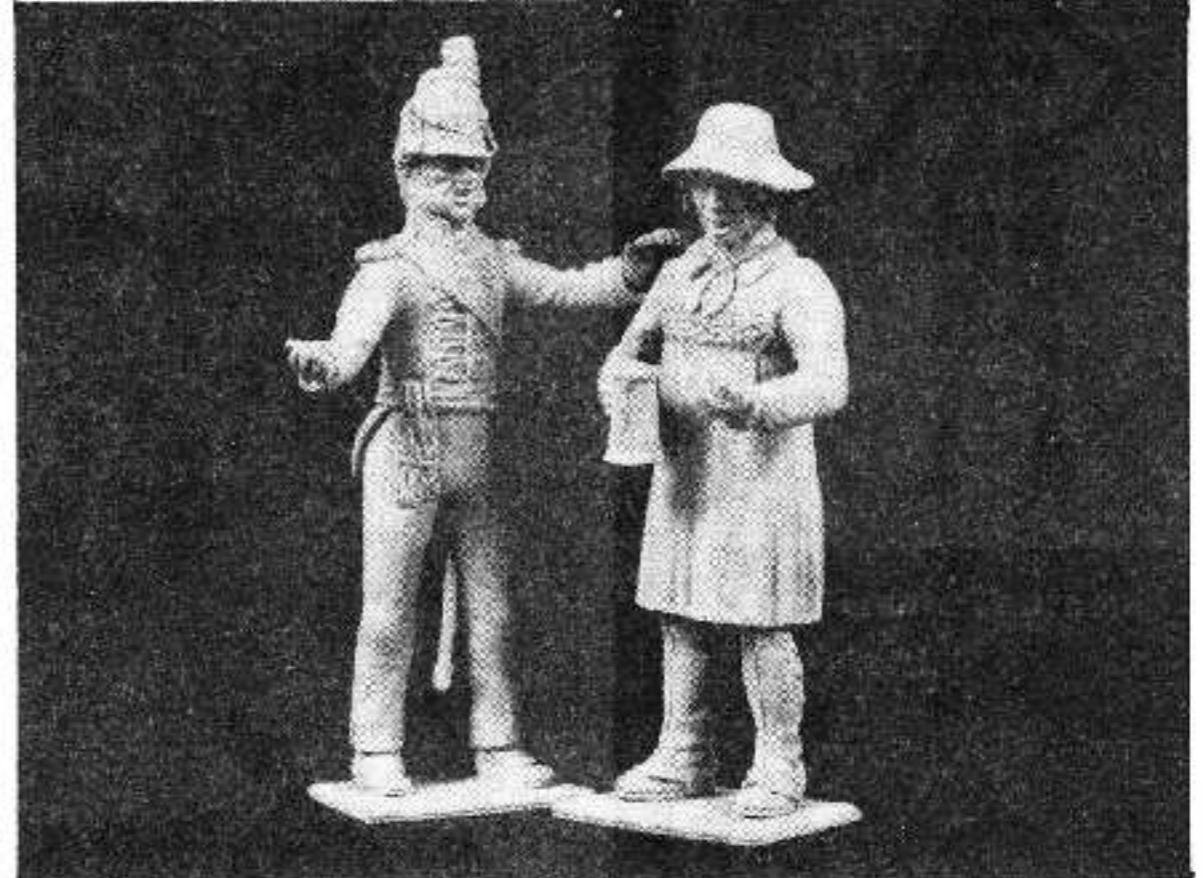
LARGER SIZE (approx. 80mm) FIGURE



AX-1. Mermaid

EARLY 19th CENTURY

(Napoleonic Period) 1/32nd Scale Metal Kits



R22. "Taking the Kings Shilling"
(British Recruiting Sergeant & Yokel by David Sparrow)